

Agenda – Y Pwyllgor Cyfrifon Cyhoeddus

Lleoliad:	I gael rhagor o wybodaeth cysylltwch a:
Ystafell Bwyllgora 3 – Senedd	Fay Bowen
Dyddiad: Dydd Llun, 5 Mawrth 2018	Clerc y Pwyllgor
Amser: 13.15	0300 200 6565
	SeneddArchwilio@cynulliad.cymru

(Cytunodd y Pwyllgor gynnig ar 12 Chwefror 2018 o dan Reol Sefydlog 17.42 i benderfynu gwahardd y cyhoedd o Eitem 1 y cyfarfod hwn)

- 1 Rheoli meddyginiaethau: Trafod yr adroddiad drafft**
(13.15 – 13.45) (Tudalennau 1 – 61)
PAC(5)-06-18 Papur 1 – Adroddiad drafft
(Rhag-gyfarfod)
(13.45 – 14.00)
- 2 Cyflwyniad, ymddiheuriadau, dirprwyon a datgan buddiannau**
(14.00)
- 3 Papur(au) i'w nodi**
(14.00 – 14.05) (Tudalennau 62 – 64)
 - 3.1 Caffael Cyhoeddus: Caffael Cyhoeddus Comisiynydd Cenedlaethau'r Dyfodol Cymru (14 Chwefror)**
(Tudalennau 65 – 130)
 - 3.2 Caffael Cyhoeddus: Caffael Cyhoeddus Cyngor Bwrdeistref Sirol Caerffili (19 Chwefror)**
(Tudalennau 131 – 178)
- 4 Caffael Cyhoeddus: Sesiwn dystiolaeth 4**
(14.05 – 15.30) (Tudalennau 179 – 214)
Papur briffio gan y Gwasanaeth Ymchwil



PAC(5)-07-08 Papur 2 - Llywodraeth Cymru

Andrew Slade - Cyfarwyddwr Cyffredinol, Economi, Sgiliau ac Adnoddau
Naturiol

Sue Moffatt - Cyfarwyddwr Masnachol, Llywodraeth Cymru a Cyfarwyddwr - Y
Gwasanaeth Caffael Cenedlaethol

Jonathan Hopkins - Pennaeth Caffael, Llywodraeth Cymru

**5 Cynnig o dan Reol Sefydlog 17.42 i benderfynu gwahardd y
cyhoedd o'r cyfarfod ar gyfer y busnes a ganlyn:**

(15.30)

Eitem 6 a'r cyfarfod a gynhelir ar 12 Mawrth 2018

6 Caffael Cyhoeddus: Trafod y dystiolaeth a ddaeth i law

(15.30 - 16.00)

Mae cyfyngiadau ar y ddogfen hon

Eitem 3

Cofnodion cryno – Y Pwyllgor Cyfrifon Cyhoeddus

Lleoliad:

Gellir gwyllo'r cyfarfod ar [Senedd TV](#) yn:

Ystafell Bwyllgora 2 – y Senedd

<http://senedd.tv/cy/4508>

Dyddiad: Dydd Llun, 26 Chwefror 2018

Amser: 15.05 – 16.58

Yn bresennol

Categori	Enwau
Aelodau'r Cynulliad:	Nick Ramsay AC (Cadeirydd) Mohammad Asghar (Oscar) AC Vikki Howells AC Rhianon Passmore AC Lee Waters AC
Tystion:	Naomi Alleyne, Cymdeithas Llywodraeth Leol Cymru Huw David, Cymdeithas Llywodraeth Leol Cymru Geraint Hopkins, Cyngor Bwrdeistref Sirol Rhondda Cynon Taf
Swyddfa Archwilio Cymru:	Anthony Barrett – Archwilydd Cyffredinol Cynorthwyol Cymru Matthew Mortlock Dave Thomas
Staff y Pwyllgor:	Meriel Singleton (Ail Glerc) Claire Griffiths (Dirprwy Glerc) Sian Thomas (Ymchwilydd)



Cynulliad
Cenedlaethol
Cymru

National
Assembly for
Wales

Tudalen y pecyn 62

1 Rheoli meddyginiaethau: Trafod yr adroddiad drafft

1.1 Trafododd yr Aelodau yr adroddiad drafft. Yn sgil cyfyngiadau amser, cytunodd yr Aelodau i ddychwelyd at y mater hwn yng nghyfarfod y Pwyllgor wythnos nesaf.

2 Cyflwyniad, ymddiheuriadau, dirprwyon a datgan buddiannau

2.1 Croesawodd y Cadeirydd yr Aelodau i'r cyfarfod.

2.2 Cafwyd ymddiheuriadau gan Neil Hamilton AC ac Adam Price AC.

3 Papur(au) i'w nodi

3.1 Cafodd y papurau eu nodi.

3.2 O ran y papurau a gafodd eu nodi, cytunwyd ar y camau penodol a ganlyn:

- Cynnal sesiwn dystiolaeth gyda Llywodraeth Cymru ynghylch yr adolygiad o'r gwasanaeth awyr oddi mewn i Gymru rhwng Caerdydd ac Ynys Môn;
- Ysgrifennu at Gyfarwyddwr yr Economi, Sgiliau ac Adnoddau Naturiol yn gofyn am ragor o eglurder ynghylch y berthynas rhwng Llywodraeth Cymru â gwasanaeth digidol Llywodraeth y DU;
- Ysgrifennu at Gadeirydd y Pwyllgor Plant, Pobl Ifanc ac Addysg a Chadeirydd Pwyllgor yr Economi, Seilwaith a Sgiliau ynghylch elfennau codio'r rhaglen Hwb.

3.1 **Y Gwasanaeth Awyr oddi mewn i Gymru – Caerdydd i Ynys Môn: Gohebiaeth gan Ysgrifennydd y Cabinet dros yr Economi a Thrafnidiaeth (30 Ionawr 2018)**

3.2 **Maes Awyr Caerdydd: Gohebiaeth gan Lywodraeth Cymru (2 Chwefror 2018)**

3.3 **Sesiwn gychwynol: Gohebiaeth gan Lywodraeth Cymru (31 Ionawr 2018)**

3.4 **Rhaglen Cefnogi Pobl Llywodraeth Cymru: Gohebiaeth gan Lywodraeth Cymru (8 Chwefror 2018)**

3.5 **Arferion a gweithdrefnau gwaith y Pwyllgor: Gohebiaeth rhwng y Pwyllgor a Llywodraeth Cymru**

4 Plant a phobl ifanc sydd wedi bod mewn gofal: Sesiwn dystiolaeth 6

4.1 Fel rhan o'u hymchwiliad i blant a phobl ifanc sydd wedi bod mewn gofal, clywodd yr Aelodau dystiolaeth gan y Cynghorydd Huw David, Llefarydd Cymdeithas Llywodraeth Leol Cymru dros lechyd a Gofal Cymdeithasol (ac Arweinydd Cyngor Bwrdeistref Sirol Pen-y-bont ar Ogwr); y Cynghorydd Geraint Hopkins, Dirprwy Llefarydd Cymdeithas Llywodraeth Leol Cymru dros lechyd a Gwasanaethau Cymdeithasol (ac Aelod Cabinet Cyngor Bwrdeistref Sirol Rhondda Cynon Taf); a Naomi Alleyne, Cyfarwyddwr Gwasanaethau Cymdeithasol a Thai Cymdeithas Llywodraeth Leol Cymru.

4.2 Cytunodd y tystion i anfon gwybodaeth ychwanegol mewn perthynas â nifer o bwyntiau i gynorthwyo'r Pwyllgor gyda'i ymchwiliad.

5 Cynnig o dan Reol Sefydlog 17.42 i benderfynu gwahardd y cyhoedd o'r cyfarfod ar gyfer y busnes a ganlyn:

5.1 Diwygiwyd y cynnig i gynnwys Eitem 1 o'r cyfarfod a gynhelir ar 5 Mawrth 2018, a chytunwyd arno.

6 Plant a phobl ifanc sydd wedi bod mewn gofal: Trafod y dystiolaeth a ddaeth i law

6.1 Trafododd yr Aelodau y dystiolaeth a ddaeth i law.



By email

14th February 2018.

Re: Public Accounts Committee Meeting Monday the 5th of February 2018

Dear Nick,

Thank you for the opportunity to give evidence to the PAC inquiry on procurement. I mentioned that I would provide further information to the committee both on the example of the Portland metro procurement (presentation attached) and my Future Generations Framework which although developed for infrastructure programmes I think could provide a useful basis for revisions to the Procurement Policy statement and the community benefits toolkit.

I also wanted to clarify further the answer I gave to Lee Waters regarding use of my powers to ensure that there is no confusion. In the work that I am undertaking with the National Procurement Service, Value Wales and pilot local authorities I am using my powers under section 19 of the Act.

Lee, I believe was specifically referring to section 20 powers of review. It is worth noting that reviews are intended to provide insight to me and to help the public body improve the way in which they look at the long term impact of what they do and safeguard the ability of future generations to meet their needs. Use of this power. Use of this power remains open to me, for example, should it become apparent that the Government and others are not following advice I have provide under section 19.

As I mentioned at the committee I am engaged in further dialogue with the Cabinet Secretary for Finance in terms of the issues which need to be resolved from the perspective of the Future Generations Act. I met with him and his officials this week to follow up the concerns I had expressed in writing that the policy frameworks for procurement which include the Welsh Procurement Policy Statement and the Community Benefits toolkit had not been updated to reflect the requirements of the Wellbeing of Future Generations Act. As you know the Government have indicated that they are reviewing the approach to procurement and I have made it clear that this must include work to reflect the Act as a matter of urgency. I am continuing to engage with the Government on this and am also keen to assess the report from PAC when it comes as from the evidence sessions I have seen I believe that it will certainly assist in clarifying the broader range of issues which need to be addressed.

As I told the committee, I am open to using section 20 powers if progress is not made.

Yours sincerely,



Trimet Information

Information on the Orange Line's sustainability programme:

<https://trimet.org/history/orangeline/library/sustainability.htm>

Further information on their work: <https://trimet.org/history/orangeline/library/index.htm>

Future Generations Framework:

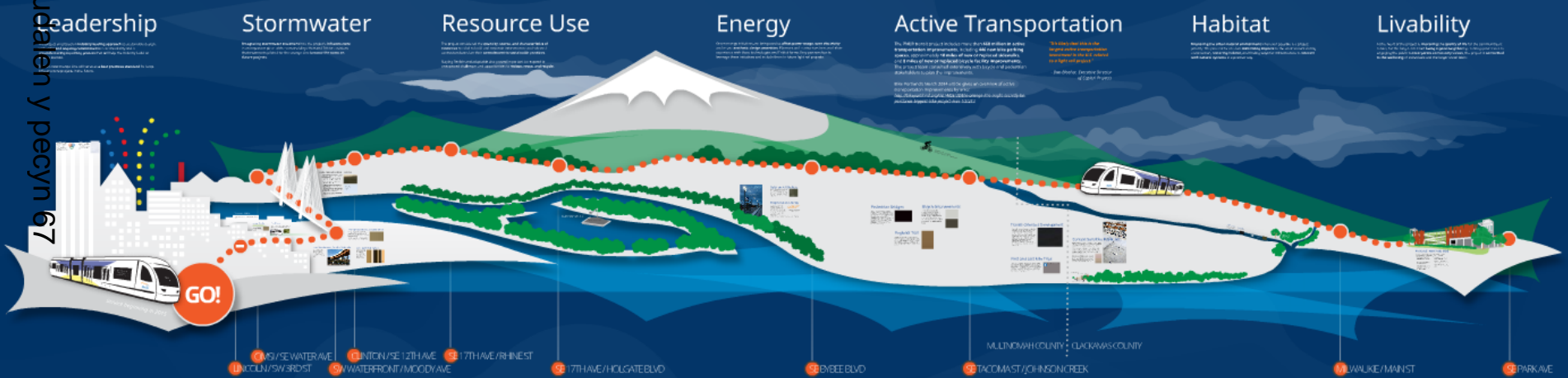
<https://futuregenerations.wales/documents/future-generations-framework/>

PORTLAND-MILWAUKIE LIGHT RAIL TRANSIT PROJECT

Sustainability Overview



Tudalen y pecyn 67



GO!

- 1 LINCOLN/SW 3RD ST
- 2 SW 4TH/SE WATER AVE
- 3 LINCOLN/SE 12TH AVE
- 4 17TH AVE/RI INEST
- 5 17TH AVE/HOLGATE BLVD
- 6 BEE BLVD
- 7 TACOMA ST/OH IN CREEK
- 8 WALKER/MAN ST
- 9 PARK AVE

Spotlights

High School Park in CLATSOP County

Closing

High School Park in CLATSOP County

22,765 predicted weekday rides ...

Taking **thousands of cars off the road...**

and saving nearly **3,000 gallons of gasoline** each workday...

Built with **community and sustainability** at its core.



ORANGE
is the new
MAX

Ready?

Set...



Tudalen y pecyn 71

Service beginning in 2015

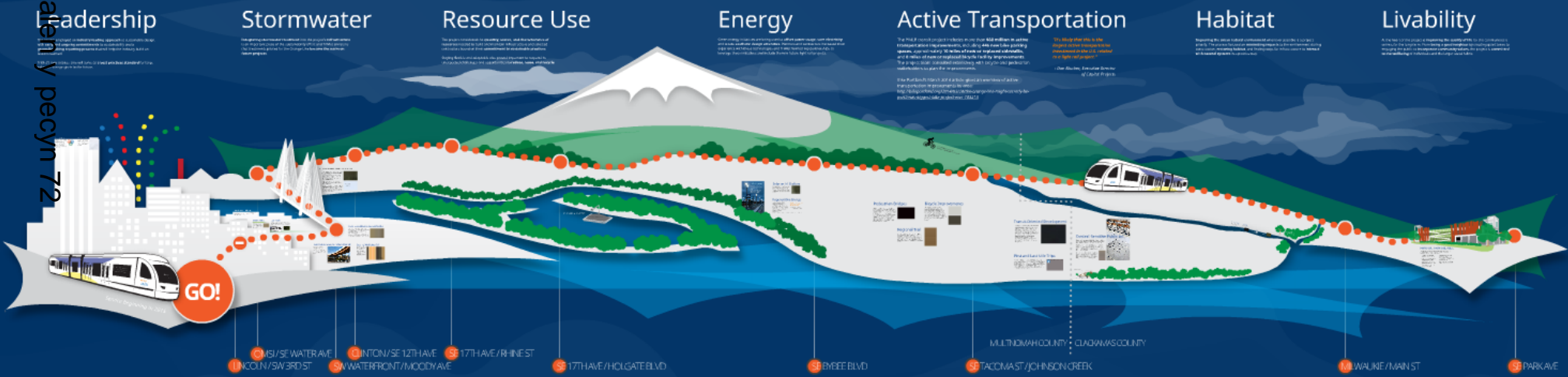


PORTLAND-MILWAUKIE LIGHT RAIL TRANSIT PROJECT



Sustainability Overview

Tudalen y pecyn 72



Spotlights

North America Park and Ride
 Future Doubling

Closing

TRIMET is proud to be a part of the community and to have been able to provide a safe and convenient way to travel. We are committed to providing a high-quality service and to being a good neighbor in the community.

Leadership

The project employed an **industry-leading approach** to sustainable design, with **early and ongoing commitments** to sustainability and a **groundbreaking reporting process** that will help the industry build on lessons learned.

TriMet's new Orange Line will serve as a **best practices standard** for large infrastructure projects in the future.

Stormwater

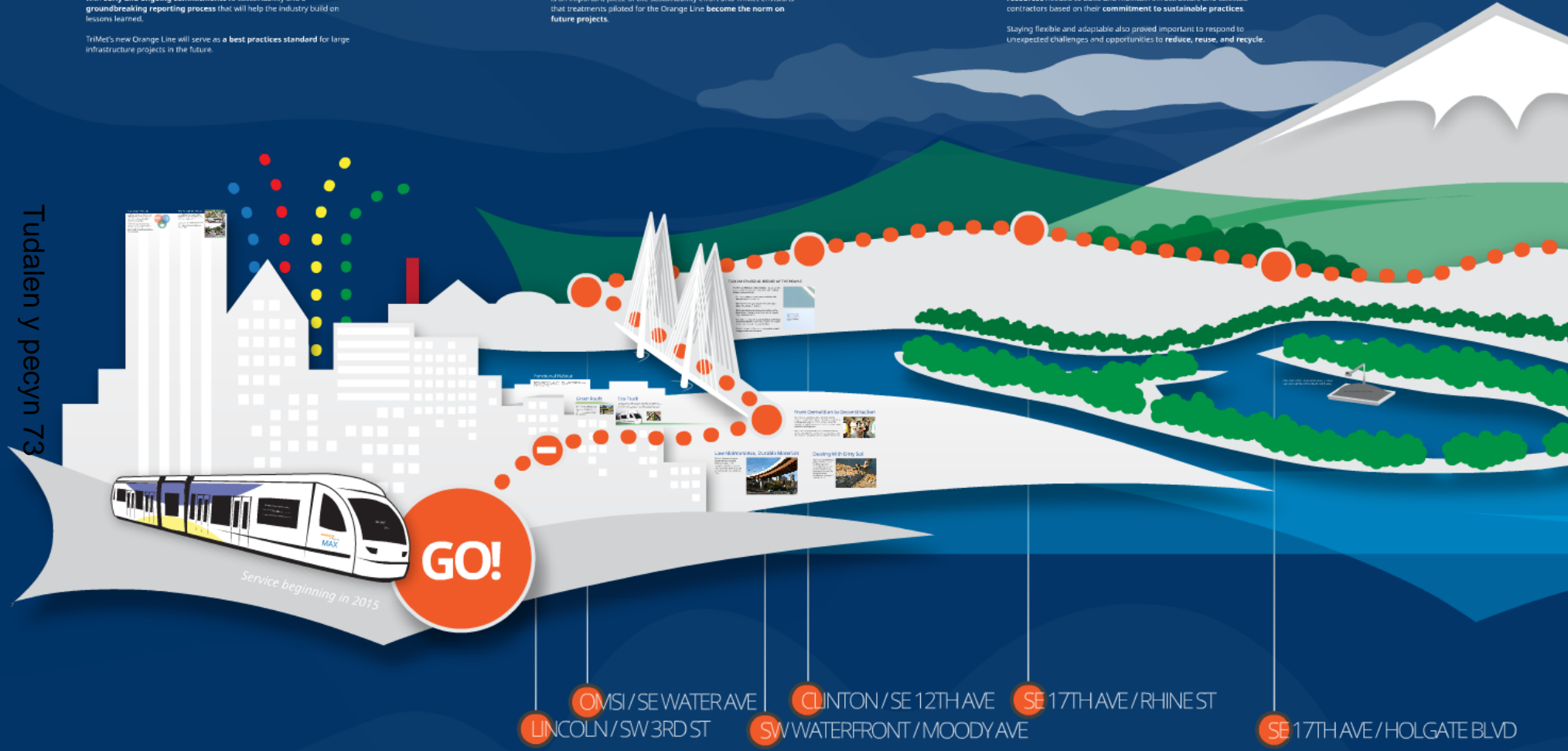
Integrating stormwater treatment into the project's infrastructure is an important piece of the sustainability effort and TriMet envisions that treatments piloted for the Orange Line **become the norm on future projects**.

Resource Use

The project considered the **quantity, source, and characteristics of resources** needed to build and maintain infrastructure and selected contractors based on their **commitment to sustainable practices**.

Staying flexible and adaptable also proved important to respond to unexpected challenges and opportunities to **reduce, reuse, and recycle**.

Tudalen y pecyn 73



GO!

Service beginning in 2015

- OMSI / SE WATER AVE
LINCOLN / SW 3RD ST
- CLINTON / SE 12TH AVE
SW WATERFRONT / MOODY AVE
- SE 17TH AVE / RHINE ST
- SE 17TH AVE / HOLGATE BLVD

Leadership

The project employed an **industry-leading approach** to sustainable design, with **early and ongoing commitments** to sustainability and a **groundbreaking reporting process** that will help the industry build on lessons learned.

TriMet's new Orange Line will serve as a **best practices standard** for large infrastructure projects in the future.

It all began with 28...

An early workshop deliberately incorporated the **bottom line** principles into the project. Twenty-eight identified sustainability strategies would be tracked **throughout design, construction and operation**.

These initial strategies blossomed into a program of more than **300 sustainability initiatives**. Together, they represent a pioneering effort to integrate a light rail line into the **natural, economic and human fabric of the community**.



The Possibilities Project

The Possibilities Project created an **urban design vision** for the alignment as a whole, for individual station areas, and for the many communities it would serve.

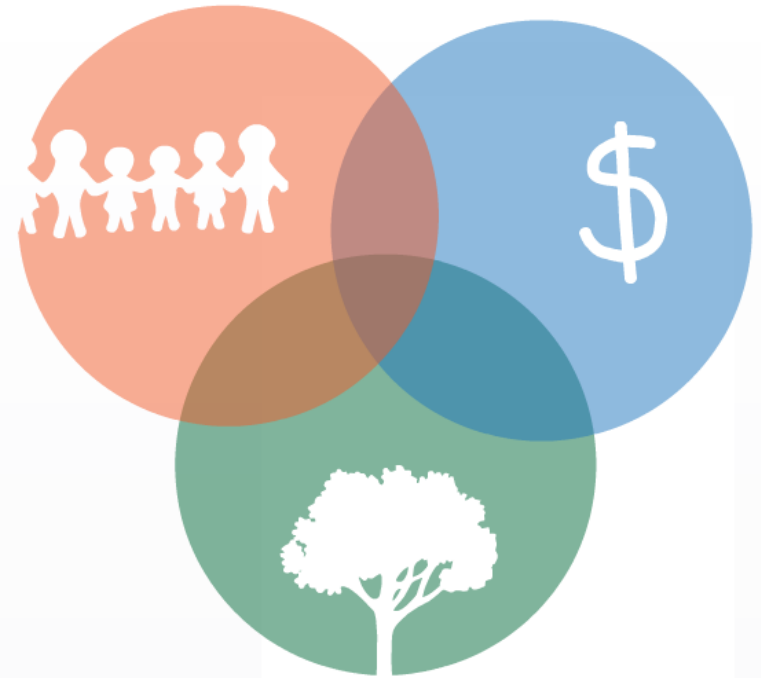
It incorporated the **needs of the community** into the light rail project – and poised communities to **leverage the new line** for their own goals.



It all began with 28...

An early workshop deliberately incorporated **triple bottom line** principles into the project. Twenty-eight identified sustainability strategies would be tracked **throughout design, construction and operation.**

These initial strategies blossomed into a program of more than **300 sustainability initiatives.** Together, they represent a pioneering effort to integrate a light rail line into the **natural, economic and human fabric of the community.**

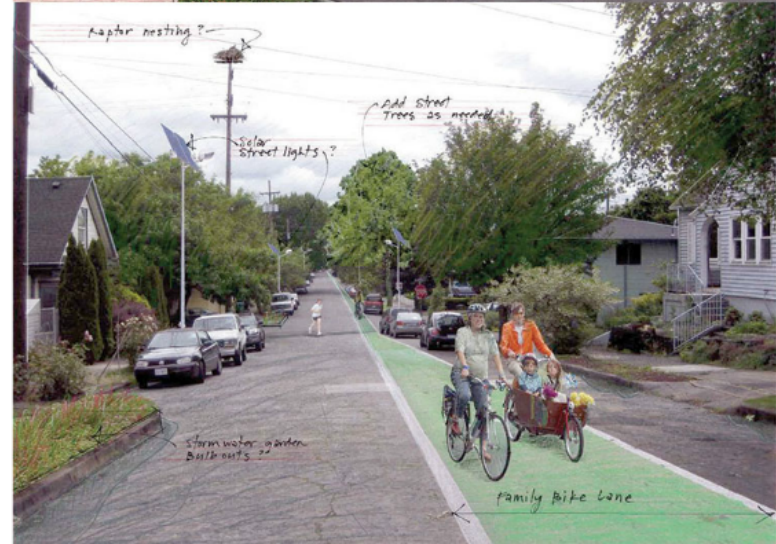


The Possibilities Project

The Possibilities Project created an **urban design vision** for the alignment as a whole, for individual station areas, and for the many communities it would serve.

It incorporated the **needs of the community** into the light rail project – and poised communities to **leverage the new line** for their own goals.

Tudalen y pecyn 77



Leadership

The project employed an **industry-leading approach** to sustainable design, with **early and ongoing commitments** to sustainability and a **groundbreaking reporting process** that will help the industry build on lessons learned.

TriMet's new Orange Line will serve as a **best practices standard** for large infrastructure projects in the future.

Stormwater

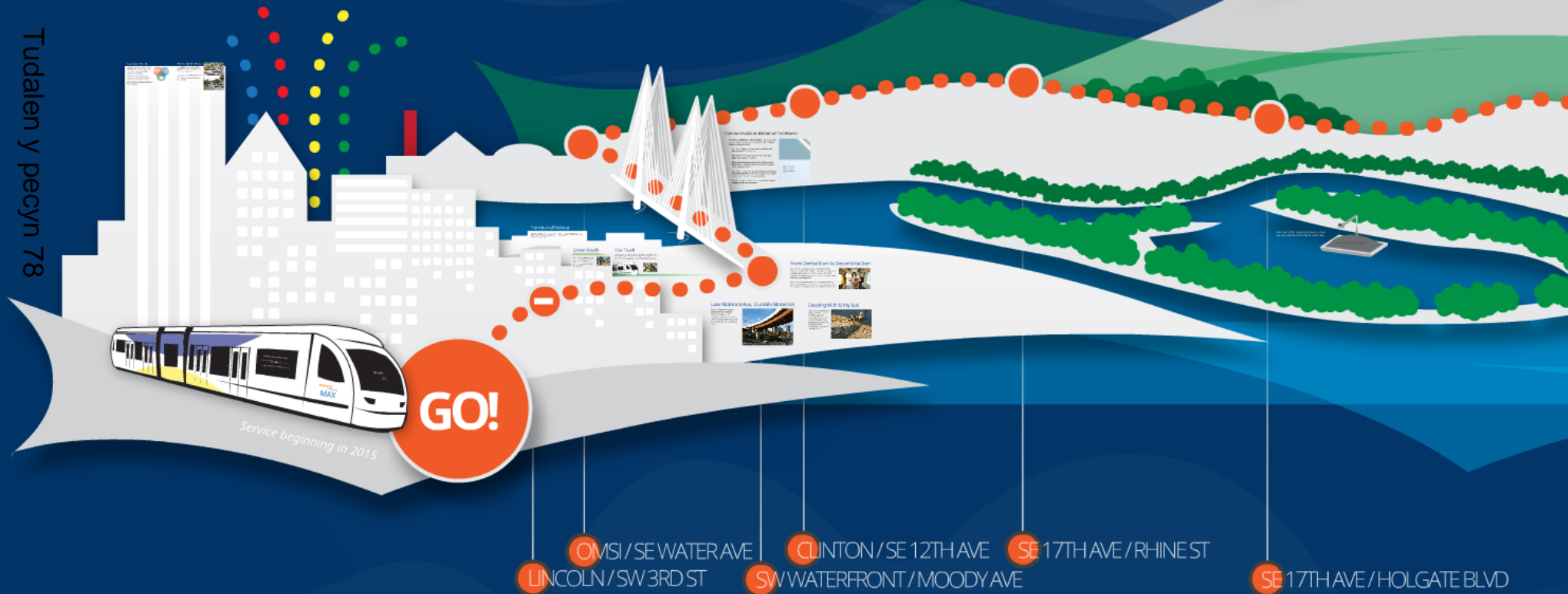
Integrating stormwater treatment into the project's infrastructure is an important piece of the sustainability effort and TriMet envisions that treatments piloted for the Orange Line **become the norm on future projects**.

Resource Use

The project considered the **quantity, source, and characteristics of resources** needed to build and maintain infrastructure and selected contractors based on their **commitment to sustainable practices**.

Staying flexible and adaptable also proved important to respond to unexpected challenges and opportunities to **reduce, reuse, and recycle**.

Tudalen y pecyn 78



Service beginning in 2015

GO!

LINCOLN / SW 3RD ST

OMSI / SE WATER AVE

SW WATERFRONT / MOODY AVE

CLINTON / SE 12TH AVE

SE 17TH AVE / RHINE ST

SE 17TH AVE / HOLGATE BLVD

Stormwater

Tudalen y pecyn 79

Integrating stormwater treatment into the project's **infrastructure** is an important piece of the sustainability effort and TriMet envisions that treatments piloted for the Orange Line **become the norm on future projects.**

Functional Habitat

252 vegetated stormwater facilities treat more than 34 acres of runoff from along the line. The facilities also absorb carbon dioxide, lower urban air temperatures, and filter pollutants out of the air.

Most are planted with native species that do not require the use of pesticides, making ideal habitat for Oregon's native pollinators.

Tudalen y pecyn 80

Green Roofs

Green eco-roofs are installed on eight structures, absorbing an average of 60% of runoff in any given area. A 1,000-square-foot eco-roof can remove an estimated 40 pounds of airborne particles per year.



Eco-Track

4,204 square feet of eco-track, a carpet of low-growing evergreen plants, has been installed at the Lincoln St./SW 3rd Ave. station. This track establishes a new type of green street to contribute to a neighborhood known for its parks and greenery. This is the only known use of this treatment in the United States.



Lincoln St./SW 3rd



Functional Habitat

252 vegetated stormwater facilities treat more than 34 acres of runoff from along the line. The facilities also **absorb carbon dioxide, lower urban air temperatures, and filter pollutants** out of the air.

Most are planted with **native species** that do not require the use of pesticides, making **ideal habitat** for Oregon's native pollinators.

Green Roofs

Tudalen y pecyn 82

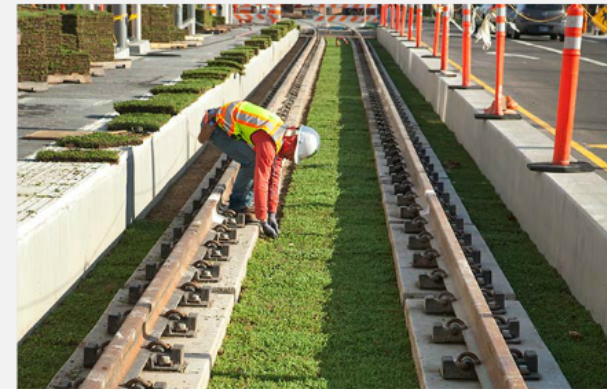
Green eco-roofs are installed on eight structures, **absorbing an average of 60% of runoff in any given area.** A 1,000-square-foot eco-roof can remove an estimated **40 pounds of airborne particles per year.**



Eco-Track

4,204 square feet of eco-track, a carpet of low-growing evergreen plants, has been installed at the Lincoln St./SW 3rd Ave. station. This track establishes a **new type of green street** to contribute to a neighborhood known for its parks and greenery. This is the **only known use of this treatment in the United States.**

Tudalen y pecyn 83



Leadership

The project employed an **industry-leading approach** to sustainable design, with **early and ongoing commitments** to sustainability and a **groundbreaking reporting process** that will help the industry build on lessons learned.

TriMet's new Orange Line will serve as a **best practices standard** for large infrastructure projects in the future.

Stormwater

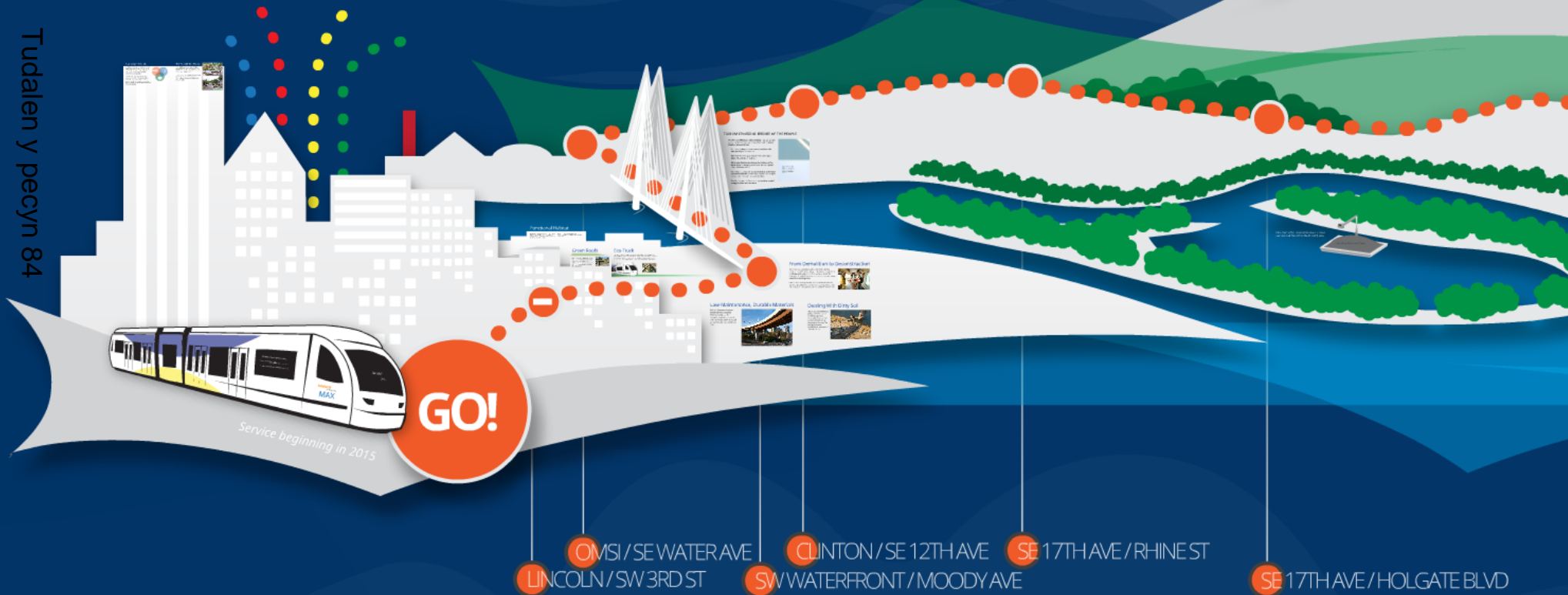
Integrating stormwater treatment into the project's infrastructure is an important piece of the sustainability effort and TriMet envisions that treatments piloted for the Orange Line **become the norm on future projects**.

Resource Use

The project considered the **quantity, source, and characteristics of resources** needed to build and maintain infrastructure and selected contractors based on their **commitment to sustainable practices**.

Staying flexible and adaptable also proved important to respond to unexpected challenges and opportunities to **reduce, reuse, and recycle**.

Tudalen y pecyn 84



Service beginning in 2015

GO!

LINCOLN / SW 3RD ST

OMSI / SE WATER AVE

SW WATERFRONT / MOODY AVE

CLINTON / SE 12TH AVE

SE 17TH AVE / RHINE ST

SE 17TH AVE / HOLGATE BLVD

Resource Use

The project considered the **quantity, source, and characteristics of resources** needed to build and maintain infrastructure and selected contractors based on their **commitment to sustainable practices**.

Staying flexible and adaptable also proved important to respond to unexpected challenges and opportunities to **reduce, reuse, and recycle**.

From Demolition to Deconstruction

More than 100 buildings required demolition during construction and TriMet adopted a deconstruction approach to **salvage and reuse** as much as possible. *Habitat for Humanity*, the *Rebuilding Center*, and *ReStore* performed **pre-demolition building skins**.

When a 19th century wooden rail car was discovered in a building scheduled for demolition, the team partnered with the *Oregon Rail Heritage Foundation* to remove and restore it.



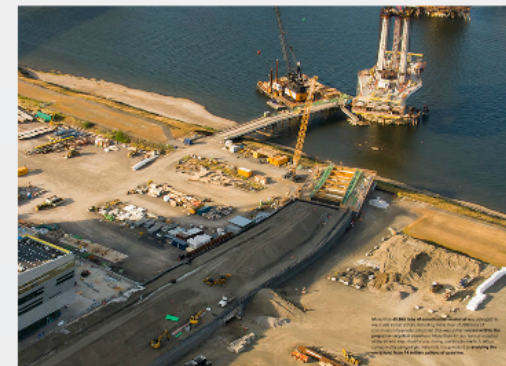
Low-Maintenance, Durable Materials

Robust, low-maintenance materials were specified whenever possible. For example, unpainted concrete and weathered steel were used on new structure along Harbor Drive.



Dealing With Dirty Soil

Historically **contaminated soils** on the west bank of the Willamette were encapsulated on-site into concrete infrastructure, **eliminating the need for energy-intensive treatment or transport** of these materials.



From Demolition to Deconstruction

More than 100 buildings required demolition during construction and TriMet adopted a deconstruction approach to **salvage and reuse** as much as possible. *Habitat for Humanity*, the *Rebuilding Center*, and *ReStore* performed **pre-demolition building skins**.

When a 19th century wooden rail car was discovered in a building scheduled for demolition, the team partnered with the *Oregon Rail Heritage Foundation* to remove and restore it.



Low-Maintenance, Durable Materials

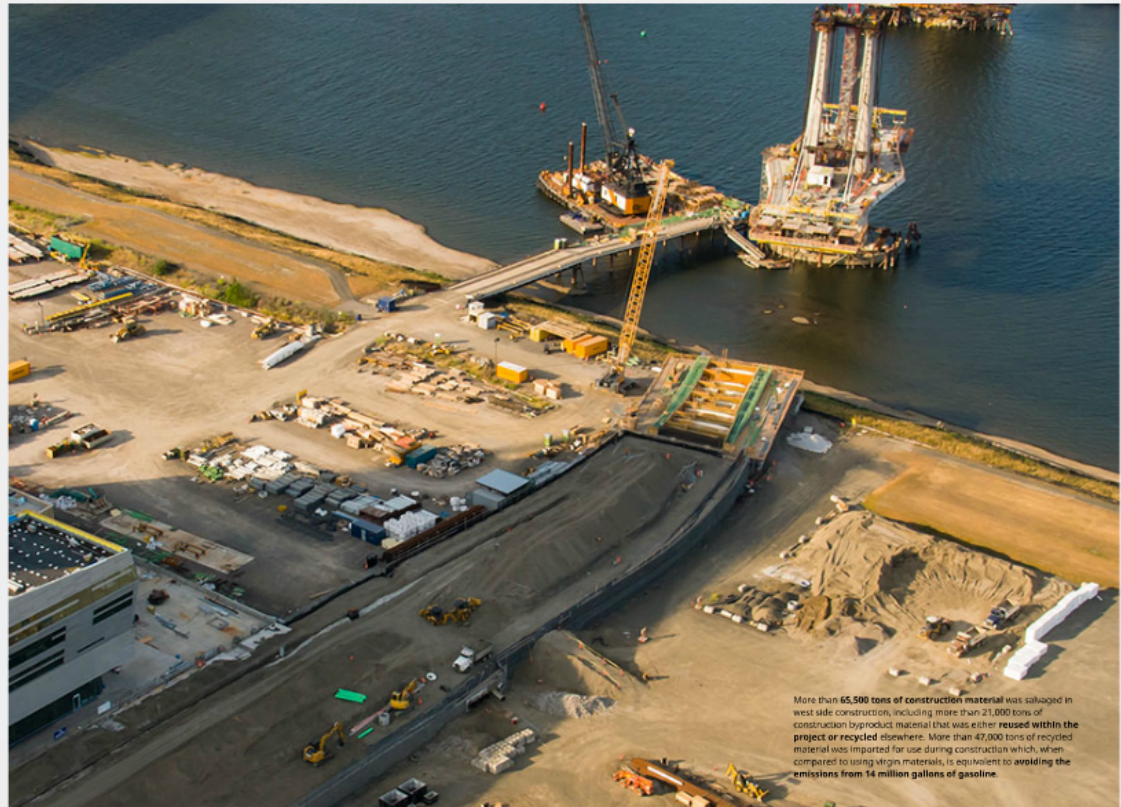
Robust, low-maintenance materials were specified whenever possible. For example, unpainted concrete and weathered steel were used on new structure along Harbor Drive.


Tudalen y pecyn 88



Dealing With Dirty Soil

Historically **contaminated soils** on the west bank of the Willamette were encapsulated on-site into concrete infrastructure, **eliminating the need for energy-intensive treatment or transport** of these materials.



An aerial photograph of a construction site. A large, white, U-shaped structure is under construction on a sandy or dirt-covered ground. Several workers and pieces of equipment are visible around the site. The background shows more of the construction area with various materials and structures.

More than **65,500 tons of construction material** was salvaged in west side construction, including more than 21,000 tons of construction byproduct material that was either **reused within the project or recycled** elsewhere. More than 47,000 tons of recycled material was imported for use during construction which, when compared to using virgin materials, is equivalent to **avoiding the emissions from 14 million gallons of gasoline.**

More than 90% of construction materials have been sourced from within the tri-county area



Ross Island Sand and Gravel

Leadership

The project employed an **industry-leading approach** to sustainable design, with **early and ongoing commitments** to sustainability and a **groundbreaking reporting process** that will help the industry build on lessons learned.

TriMet's new Orange Line will serve as a **best practices standard** for large infrastructure projects in the future.

Stormwater

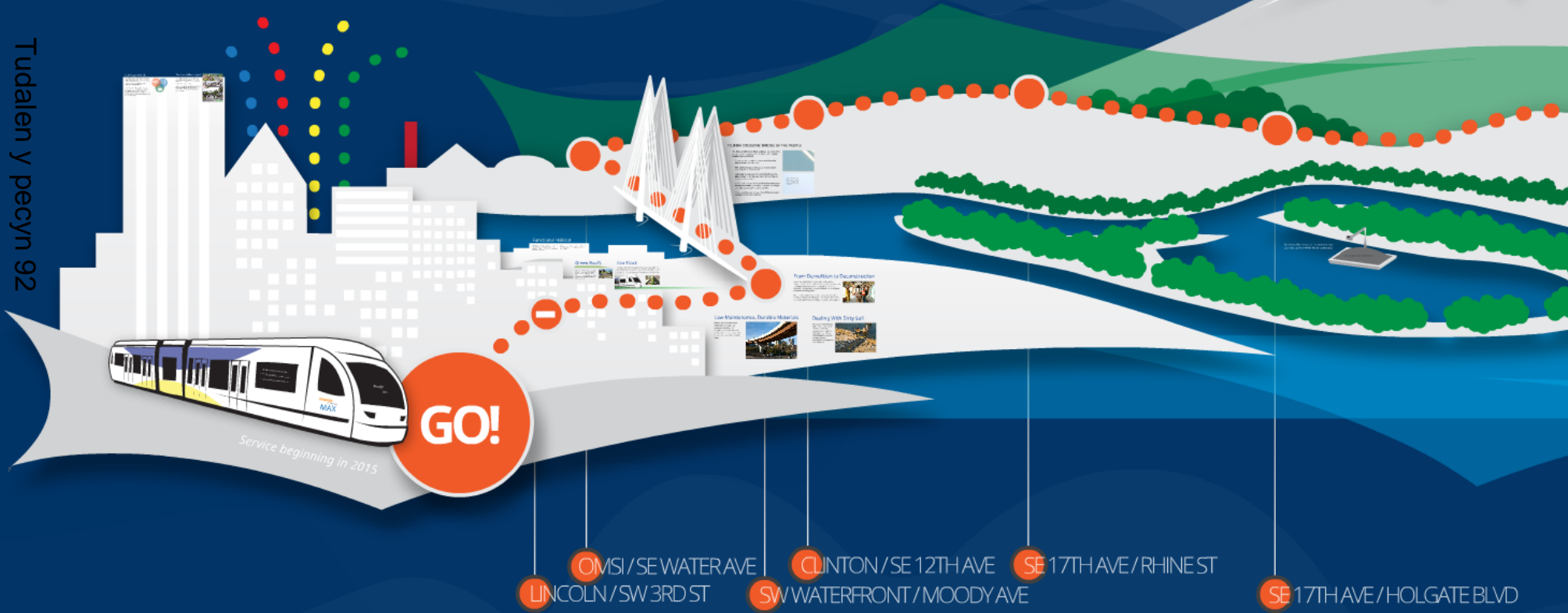
Integrating stormwater treatment into the project's infrastructure is an important piece of the sustainability effort and TriMet envisions that treatments piloted for the Orange Line **become the norm on future projects**.

Resource Use

The project considered the **quantity, source, and characteristics of resources** needed to build and maintain infrastructure and selected contractors based on their **commitment to sustainable practices**.

Staying **flexible and adaptable** also proved important to respond to unexpected challenges and opportunities to **reduce, reuse, and recycle**.

Tudalen y pecyn 92



Energy

Green energy initiatives are being used to offset power usage, save electricity and create aesthetic design amenities. Partners and contractors incorporated their experience with these technologies and Tribble formed key partnerships to leverage these initiatives and include them in future light rail projects.

Active Transportation

The PMLR transit project includes more than \$80 million in active transportation improvements, including 446 new bike parking spaces, approximately 10 miles of new or replaced sidewalks, and 8 miles of new or replaced bicycle facility improvements. The project team consulted extensively with bicycle and pedestrian stakeholders to plan the improvements.

Bike Portland's March 2014 article gives an overview of active transportation improvements by area: <http://bikeportland.org/2014/03/20/the-orange-line-might-secretly-be-portlands-biggest-bike-project-ever-103213>

"It's likely that this is the largest active transportation investment in the U.S. related to a light rail project."

- Dan Blocher, Executive Director of Capital Projects

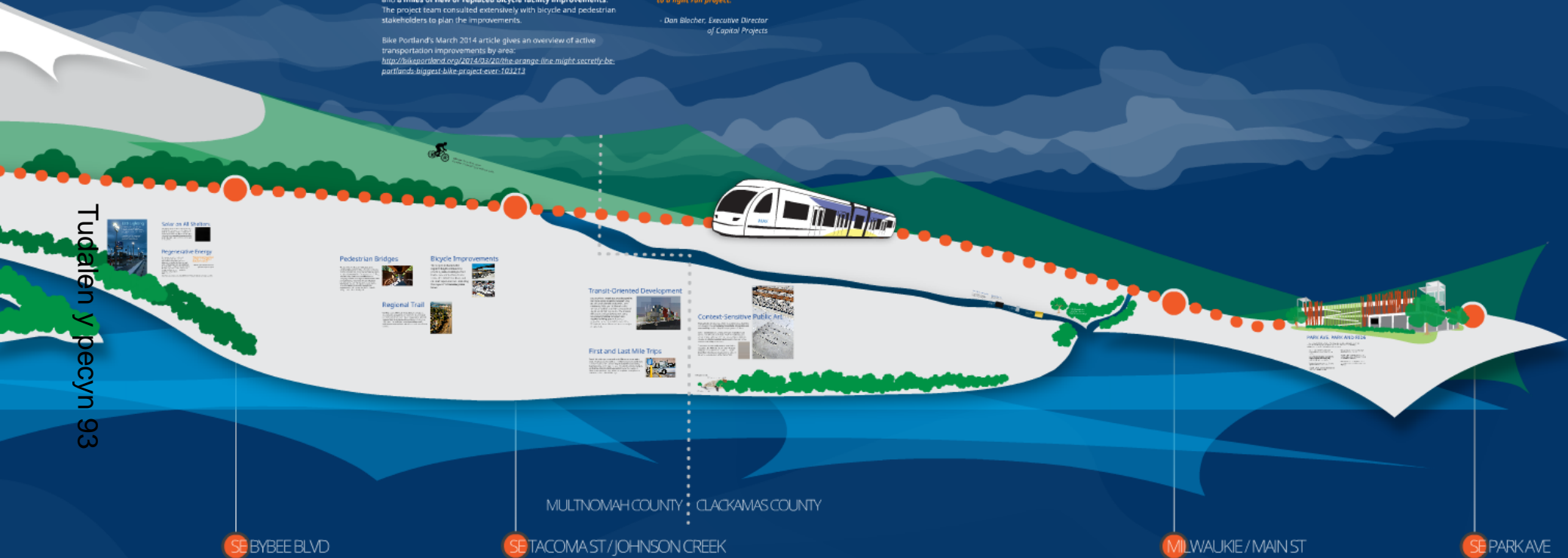
Habitat

Improving the urban natural environment whenever possible is a project priority. The project focused on minimizing impacts to the environment during construction, restoring habitat, and finding ways for infrastructure to interact with natural systems in a positive way.

Livability

At the heart of the project is improving the quality of life for the communities it serves, for the long term. From being a good neighbor by crossing quiet streets to engaging the public to incorporate community values, the project is committed to the wellbeing of individuals and the larger social fabric.

Tudalen y pecyn 93



SE BYBEE BLVD

SE TACOMA ST / JOHNSON CREEK

MLWALKIE / MAIN ST

SE PARK AVE

MULTNOMAH COUNTY | CLACKAMAS COUNTY

Pedestrian Bridges

Bicycle Improvements

Regional Trail

Transit-Oriented Development

First and Last Mile Trips

Context-Sensitive Public Art

Spotlights

- Park Avenue Park and Ride
- Tillikum Crossing

Closing



Tribble's Orange Line moves beyond providing a new public transit option to the Portland metro area. The project placed new technologies and leveraged infrastructure to incorporate sustainable practices, environmental improvements, and human-scale design.

By the time the final tests run in 2015, the Orange Line will already have created a lasting legacy - by setting a best practices standard for future large infrastructure projects in the Portland region, the Pacific Northwest and beyond.

Energy

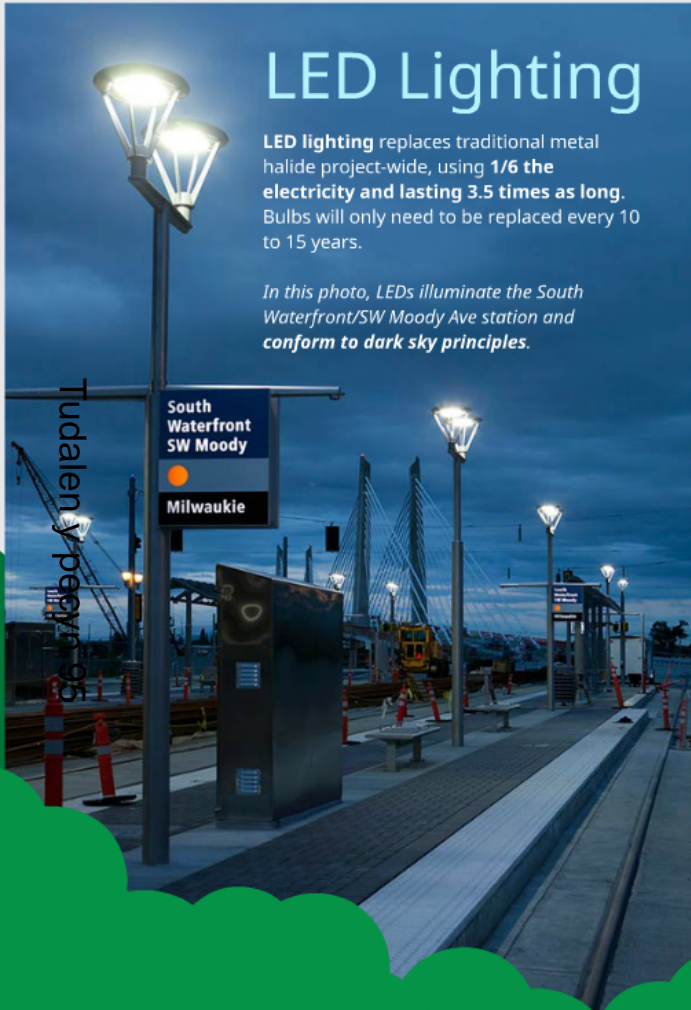
Tudalen
Open 94

Green energy initiatives are being used to **offset power usage, save electricity** and create **aesthetic design amenities**. Planners and contractors increased their experience with these technologies and TriMet formed key partnerships to leverage these initiatives and include them in future light rail projects.

LED Lighting

LED lighting replaces traditional metal halide project-wide, using **1/6 the electricity and lasting 3.5 times as long**. Bulbs will only need to be replaced every 10 to 15 years.

In this photo, LEDs illuminate the South Waterfront/SW Moody Ave station and conform to dark sky principles.



Solar on All Shelters

Every MAX shelter includes solar panels on its roof, which offset power usage at stations and by trains. A study of a similar project at CalPoly found that the solar panel installation at a single site would have a **complete investment return within 12 years** – much shorter than the lifetime of the panels.



Regenerative Energy

The Orange Line will boast the **first supercapacitor in the U.S.** to use **regenerative energy for light rail**. It harnesses energy from braking trains and feeds it back to other trains for acceleration or uphill climbs. The system was championed by TriMet engineers and will create annual energy savings resulting in a **payback window of only 1.4 years**.

Find out more:

<http://earthtechling.com/2013/06/light-rail-line-accelerates-brake-energy-storage/>

"This pilot project is positioned to bring a new and efficient technology to the U.S."

- Dan Blocher, executive director of TriMet capital projects

LED Lighting

LED lighting replaces traditional metal halide project-wide, using **1/6 the electricity and lasting 3.5 times as long.** Bulbs will only need to be replaced every 10 to 15 years.

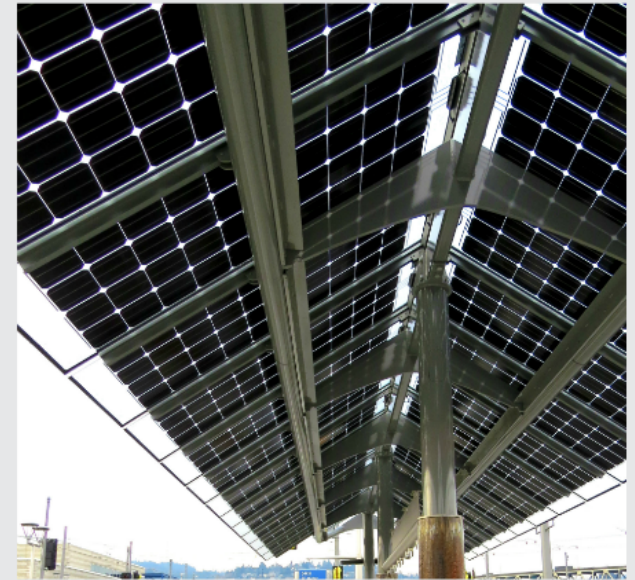
In this photo, LEDs illuminate the South Waterfront/SW Moody Ave station and conform to dark sky principles.

South
Waterfront



Solar on All Shelters

Every MAX shelter includes solar panels on its roof, which offset power usage at stations and by trains. A study of a similar project at CalPoly found that the solar panel installation at a single site would have a **complete investment return within 12 years** – much shorter than the lifetime of the panels.



Regenerative Energy

Regenerative Energy

The Orange Line will boast the **first supercapacitor in the U.S.** to use **regenerative energy for light rail.** It harnesses energy from braking trains and feeds it back to other trains for acceleration or uphill climbs. The system was championed by TriMet engineers and will create annual energy savings resulting in a **payback window of only 1.4 years.**

Find out more:

<http://earthtechling.com/2013/06/light-rail-line-accelerates-brake-energy-storage/>

“This pilot project is positioned to bring a new and efficient technology to the U.S.”

- Dan Blocher, executive director of TriMet capital projects

Energy

Green energy initiatives are being used to offset power usage, save electricity and create aesthetic design amenities. Partners and contractors increased their experience with these technologies and Tidelift formed key partnerships to leverage these initiatives and include them in future light rail projects.

Active Transportation

The PMLR transit project includes more than \$60 million in active transportation improvements, including 446 new bike parking spaces, approximately 10 miles of new or replaced sidewalks, and 8 miles of new or replaced bicycle facility improvements. The project team consulted extensively with bicycle and pedestrian stakeholders to plan the improvements.

Bike Portland's March 2014 article gives an overview of active transportation improvements by area:
<http://bikeportland.org/2014/03/20/the-orange-line-might-secretly-be-portlands-biggest-bike-project-ever-103213>

"It's likely that this is the largest active transportation investment in the U.S. related to a light rail project."

- Dan Blocher, Executive Director of Capital Projects

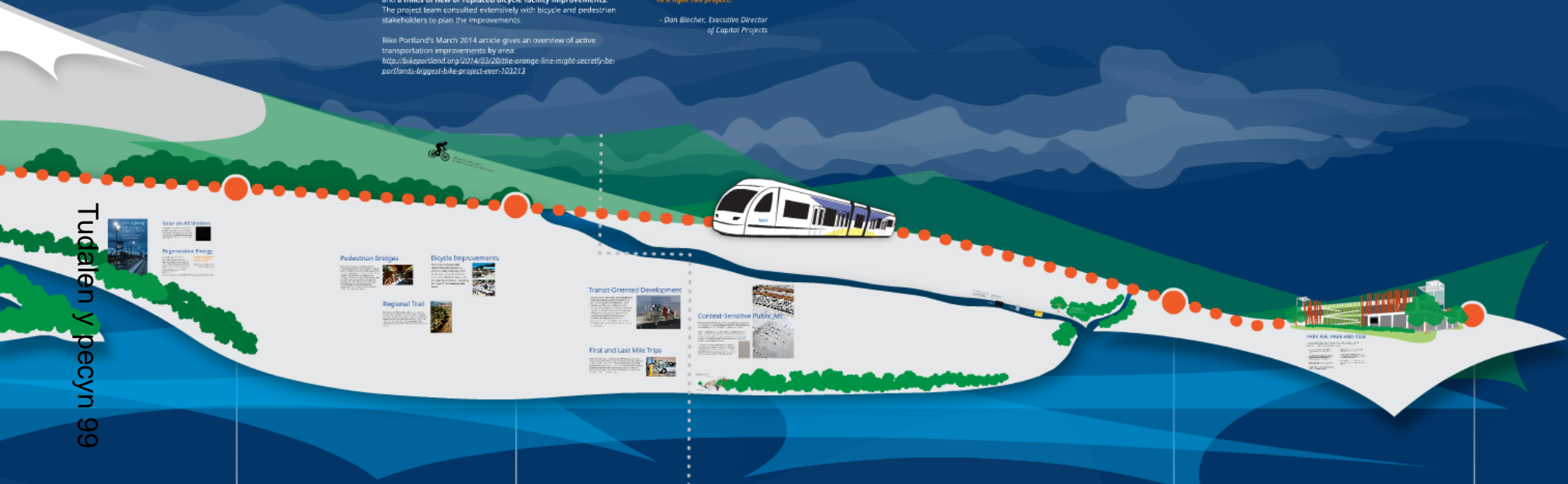
Habitat

Improving the urban natural environment wherever possible is a project priority. The process focused on minimizing impacts to the environment during construction, restoring habitat, and finding ways for infrastructure to interact with natural systems in a positive way.

Livability

At the heart of the project is improving the quality of life for the communities it serves, for the long-term. From being a good neighbor by creating equal access to engaging the public to incorporate community values, the project is committed to the wellbeing of individuals and the larger social fabric.

Tudalen y pecyn 99



SE BYBEE BLVD

SE TACOMA ST / JOHNSON CREEK

SE MILWAUKIE / MAIN ST

SE PARK AVE

MULTNOMAH COUNTY CLACKAMAS COUNTY

Spotlights

- Park Avenue Park and Ride
- Tilikum Crossing

Closing



Tidelift's Orange Line moves beyond providing a new public transit option to the Portland metro area. The project placed new technologies and leveraged infrastructure to incorporate sustainable practices, environmental improvements, and human-scale design.

By the time the first train runs in 2015, the Orange Line will already have created a lasting legacy - by serving as a best practices standard for future large infrastructure projects in the Portland region, the Pacific Northwest and beyond.

Active Transportation

The PMLR transit project includes more than **\$60 million in active transportation improvements**, including **446 new bike parking spaces**, approximately **10 miles of new or replaced sidewalks**, and **8 miles of new or replaced bicycle facility improvements**.

The project team consulted extensively with bicycle and pedestrian stakeholders to plan the improvements.

Bike Portland's March 2014 article gives an overview of active transportation improvements by area:

<http://bikeportland.org/2014/03/20/the-orange-line-might-secretly-be-portlands-biggest-bike-project-ever-103213>

"It's likely that this is the largest active transportation investment in the U.S. related to a light rail project."

- Dan Blocher, Executive Director of Capital Projects



Pedestrian Bridges

The team has worked to include pedestrian crossing improvements throughout the project to **resolve transportation safety and equity issues** in adjacent communities. For example, the Kellogg railroad bridge has been retrofitted with a “hanging” pedestrian bridge to **connect two sides of a community that have historically been separated**. The SE 17th Ave & Rhine St. station **addresses gaps in essential pedestrian connections** with a reconstructed multimodal bridge across the railroad yard.



Bicycle Improvements

The project **enhances the region’s bicycle network** by providing **safe crossings** of rail tracks, new connections to and across the Willamette River, and on-road improvements – including the region’s first **advisory bike lanes**.



Regional Trail

Working closely with local jurisdictions, the project is reconstructing a segment of Trolley Trail in conjunction with light rail construction. This is a key piece of planned **regional bicycle and pedestrian arteries** – linking two major multi-use trail systems and **providing a safe, continuous route** between Sellwood and Milwaukie town centers.



Pedestrian Bridges

The team has worked to include pedestrian crossing improvements throughout the project to **resolve transportation safety and equity issues** in adjacent communities. For example, the Kellogg railroad bridge has been retrofitted with a “hanging” pedestrian bridge to **connect two sides of a community that have historically been separated**. The SE 17th Ave & Rhine St. station **addresses gaps in essential pedestrian connections** with a reconstructed multimodal bridge across the railroad yard.



Regional Trail

Tudalen y pecyn 103 Working closely with local jurisdictions, the project is reconstructing a segment of Trolley Trail in conjunction with light rail construction. This is a key piece of planned **regional bicycle and pedestrian arteries** – linking two major multi-use trail systems and **providing a safe, continuous route** between Sellwood and Milwaukie town centers.



Bicycle Improvements

Tudalen y pecyn 104

The project **enhances the region's bicycle network** by providing **safe crossings** of rail tracks, new connections to and across the Willamette River, and on-road improvements – including the region's first **advisory bike lanes**.





446 new bike parking spaces
5.7 miles of new cycling or multi-use paths

Energy

Green energy in Ballwin are being used to offset power usage, save electricity and create aesthetic design amenities. Partners and contractors increased their experience with these technologies and TriMet formed key partnerships to leverage these initiatives and include them in future light rail projects.

Active Transportation

The PMLR transit project includes more than \$60 million in active transportation improvements, including 446 new bike parking spaces, approximately 10 miles of new or replaced sidewalks, and 8 miles of new or replaced bicycle facility improvements. The project team consulted extensively with bicycle and pedestrian stakeholders to plan the improvements.

Bike Portland's March 2014 article gives an overview of active transportation improvements by area:
<http://bikeportland.org/2014/03/23/the-orange-line-might-secretly-be-portlands-largest-bike-project-ever-103213>

"It's likely that this is the largest active transportation investment in the U.S. related to a light rail project."

- Dan Blocher, Executive Director of Capital Projects

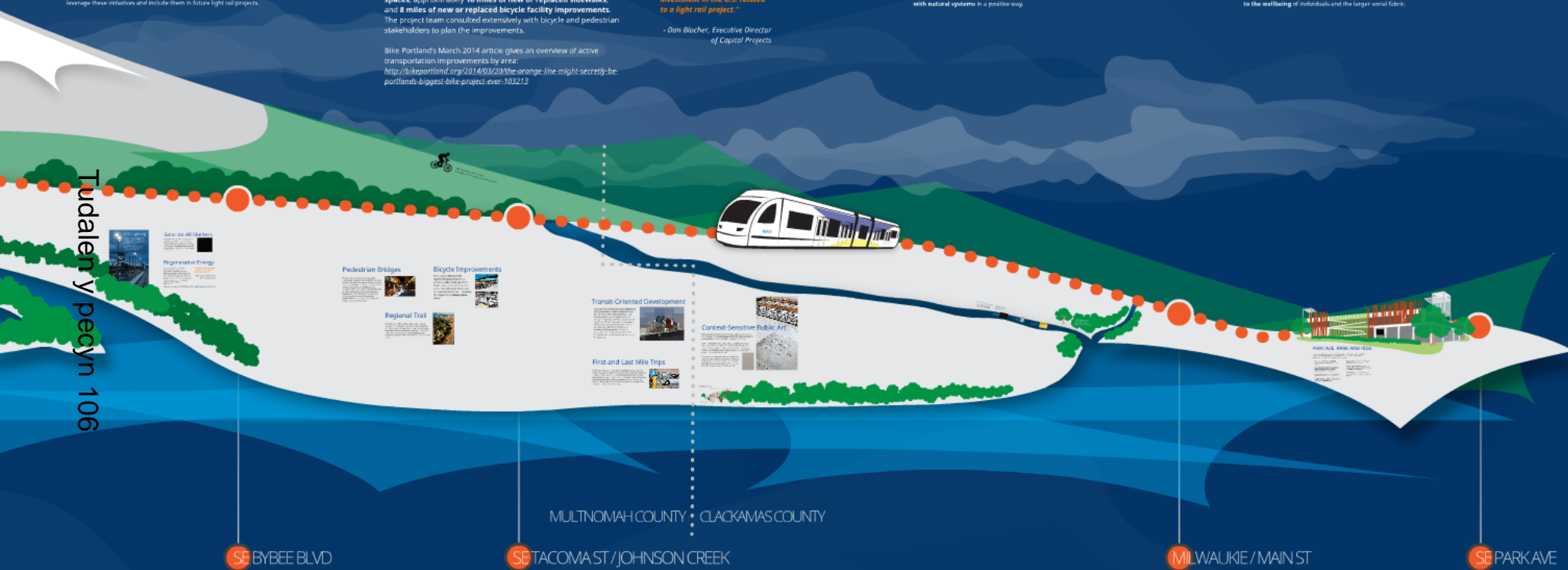
Habitat

Improving the urban natural environment wherever possible is a project priority. The process focused on minimizing impacts to the environment during construction, restoring habitat, and finding ways for infrastructure to interact with natural systems in a positive way.

Livability

At the heart of the project is improving the quality of life for the communities it serves, for the long term. From being a good neighbor by creating quiet zones to engaging the public to incorporate community values, the project is committed to the well-being of individuals and the larger social fabric.

Tudalen y pecyn 106



SE BYBEE BLVD

SE TACOMA ST / JOHNSON CREEK

ML WAWJEE / MAIN ST

SE PARK AVE

MULTNOMAH COUNTY CLACKAMAS COUNTY

Spotlights

- Park Avenue Park and Ride
- Tilikum Crossing

Closing



TriMet's Orange Line moves beyond providing a new public transit option to the Portland metro area. The project placed new technologies and leveraged infrastructure to incorporate sustainable practices, environmental improvements, and human-scale design.

By the time the first train runs in 2015, the Orange Line will already have created a lasting legacy - by setting as a best practices standard for future large infrastructure projects in the Portland region, the Pacific Northwest and beyond.

Habitat

Improving the urban natural environment whenever possible is a project priority. The process focused on **minimizing impacts** to the environment during construction, **restoring habitat**, and finding ways for infrastructure to **interact with natural systems** in a positive way.

New Shoreline Habitat

The project contributed \$1 million in mitigation funds to **restore shallow water habitat along the Willamette River**. The South Waterfront project cut industrial fill from the riverbank and removed about 27,000 tons of concrete, contaminated soil and debris. An **innovative retaining wall is planted with native species** and protects the area from erosion. The 25,500 square feet of new riparian habitat will help **restore native fish populations**.

Urban Creeks

Agency and railroad partners worked with community groups to **return natural water flows and healthy habitat** to three area creeks:

At **Johnson Creek** near Tacoma Street, large pieces of woody debris acquired during Orange Line construction were placed in the water to restore salmon habitat.



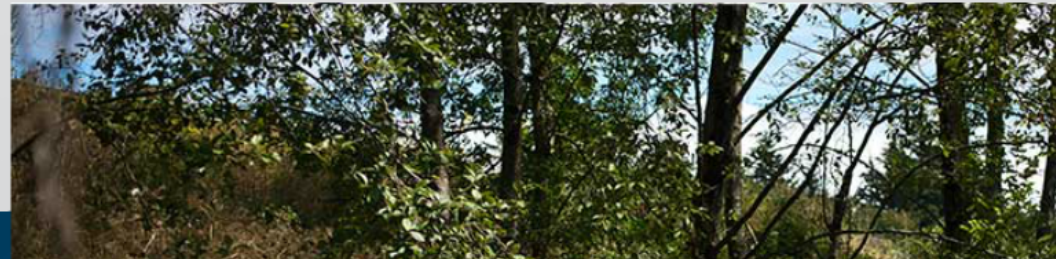
New Shoreline Habitat

Tudalen y pecyn 109

The project contributed \$1 million in mitigation funds to **restore shallow water habitat along the Willamette River**. The South Waterfront project cut industrial fill from the riverbank and removed about 27,000 tons of concrete, contaminated soil and debris. An **innovative retaining wall is planted with native species** and protects the area from erosion. The 25,500 square feet of new riparian habitat will help **restore native fish populations**.

Urban Creeks

Agency and railroad partners worked with community groups to **return natural water flows and healthy habitat** to three area creeks:



Agency and railroad partners worked with community groups to **return natural water flows and healthy habitat** to three area creeks:

Tudalen y pecyn 111

At **Johnson Creek** near Tacoma Street, large pieces of woody debris acquired during Orange Line construction were placed in the water to restore salmon habitat.

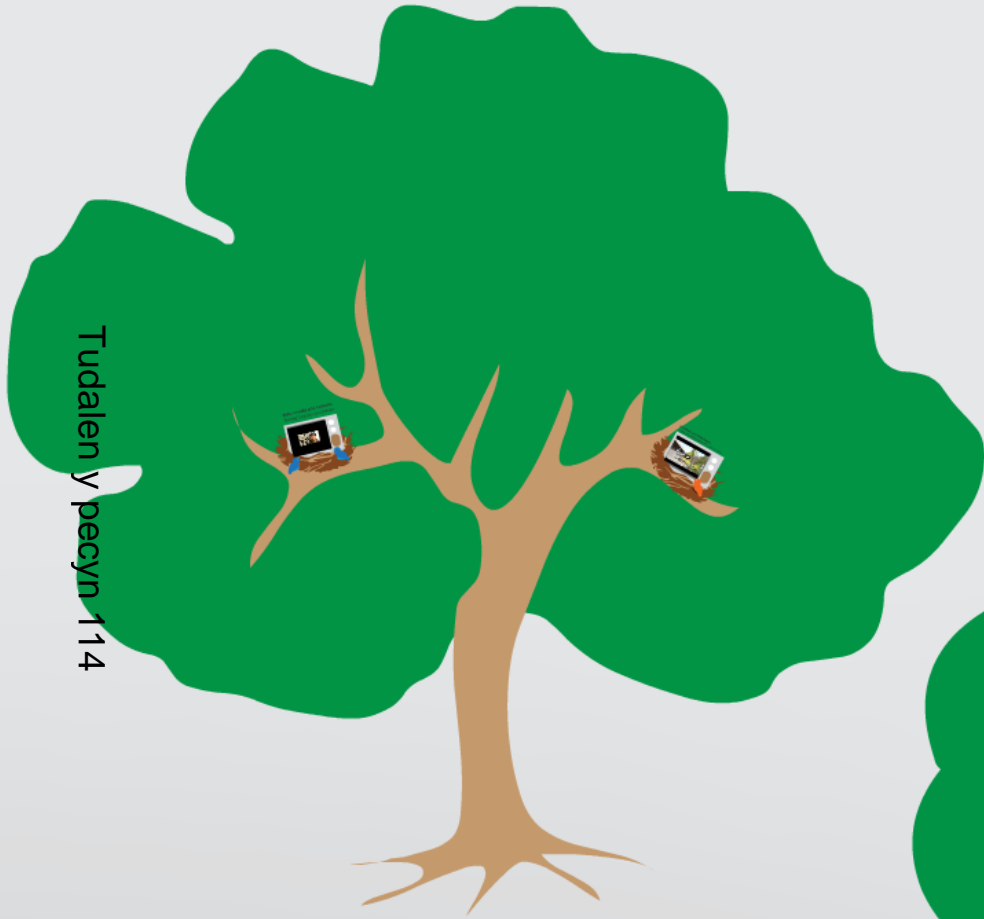


Project involvement on **Crystal Springs Creek** work allowed restoration of an entire watershed, from the mouth to the headwaters, to be completed in one coordinated effort.



The project helped local civic leaders restore 3,000 square feet of creek wetlands and mitigate impacts of the project bridge being constructed over **Kellogg Creek**.





2,475 trees planted -
nearly four times as
many as were removed

Energy

Green energy solutions are being used to offset power usage, save electricity and create aesthetic design amenities. Partners and contractors increased their experience with these technologies and Tilted formed key partnerships to leverage these initiatives and include them in future light rail projects.

Active Transportation

The PMLR transit project includes more than \$60 million in active transportation improvements, including 446 new bike parking spaces, approximately 10 miles of new or replaced sidewalks, and 8 miles of new or replaced bicycle facility improvements. The project team consulted extensively with bicycle and pedestrian stakeholders to plan the improvements.

Bike Portland's March 2014 article gives an overview of active transportation improvements by area:
<http://bikeportland.org/2014/03/28/the-orange-line-might-securely-be-portlands-biggest-bike-project-ever-103213>

"It's likely that this is the largest active transportation investment in the U.S. related to a light rail project."

- Dan Blocher, Executive Director of Capital Projects

Habitat

Improving the urban natural environment wherever possible is a project priority. The process focused on minimizing impacts to the environment during construction, restoring habitat, and finding ways for infrastructure to interact with natural systems in a positive way.

Livability

At the heart of the project is improving the quality of life for the communities it serves, for the long-term. From being a good neighbor by creating quiet zones to engaging the public to the corporate community values, the project is committed to the wellbeing of individuals and the larger social fabric.

Tudalen y pecyn 115



Pedestrian Bridges



Bicycle Improvements



Regional Trail



Transit-Oriented Development



First and Last Mile Trips



Context Sensitive Public Art



Park Ave Park and Ride



SE BYBEE BLVD

SE TACOMA ST / JOHNSON CREEK

MULTNOMAH COUNTY CLACKAMAS COUNTY

MILWAUKEE / MAIN ST

SE PARK AVE

Spotlights

- Park Avenue Park and Ride
- Tilikum Crossing

Closing



TilMet's Orange Line moves beyond providing a new public transit option to the Portland metro area. The project placed new technologies and leveraged infrastructure to incorporate sustainable practices, environmental improvements, and human-scale design.

By the time the first train runs in 2015, the Orange Line will already have created a lasting legacy - by serving as a best practices standard for future large infrastructure projects in the Portland region, the Pacific Northwest and beyond.

Livability

At the heart of the project is **improving the quality of life** for the communities it serves, for the long-term. From **being a good neighbor** by creating quiet zones to engaging the public to **incorporate community values**, the project is **committed to the wellbeing** of individuals and the larger social fabric.

Transit-Oriented Development

Creating vibrant **mixed-use areas designed to maximize access to public transport** a key goal of transit-oriented development. One creative example is taking place on a tiny remnant of land left over from construction of the Clinton/SE 12th Ave Station. The property will become a unique development, using **repurposed shipping containers as a modular building system**. It draws a connection to the industrial location of the SE Portland site and Portland's role as a major shipping hub.



Tudalen y pecyn 117

First and Last Mile Trips

Transit ridership depends on **safe and efficient access** to station areas. The project worked with community members and partners to maximize station access, include **bicycle and pedestrian facility improvements**, and designated space for **electric vehicle chargers, car sharing, and bike sharing programs** along the alignment. These amenities offer transit riders more options to complete the "last mile" (or first mile) of their trip.



Context-Sensitive Public Art

Expressing the uniqueness of individual station areas, inspiring civil discourse, and **encouraging connectivity, stewardship and sustainability** are what the public art program is all about.

Early in construction, the Orange Lining art installation used construction features, such as silt fences and sidewalks, as a canvas for poetic phrases from area writers. The initiative was intended to **stimulate public involvement** in the new rail line, even as it was being constructed.

In response to community concern about losing trees along the Milwaukie alignment, PMLR's art program commissioned six local artists to **use wood from the trees to create art** to be placed along the new extension of the Trolley Trail.



6,576 jobs created...

1,787 direct professional and technical jobs



4,789 on-site construction jobs



Transit-Oriented Development

Creating vibrant **mixed-use areas designed to maximize access to public transport** a key goal of transit-oriented development. One creative example is taking place on a tiny remnant of land left over from construction of the Clinton/SE 12th Ave Station. The property will become a unique development, using **repurposed shipping containers as a modular building system**. It draws a connection to the industrial location of the SE Portland site and Portland's role as a major shipping hub.



First and Last Mile Trips

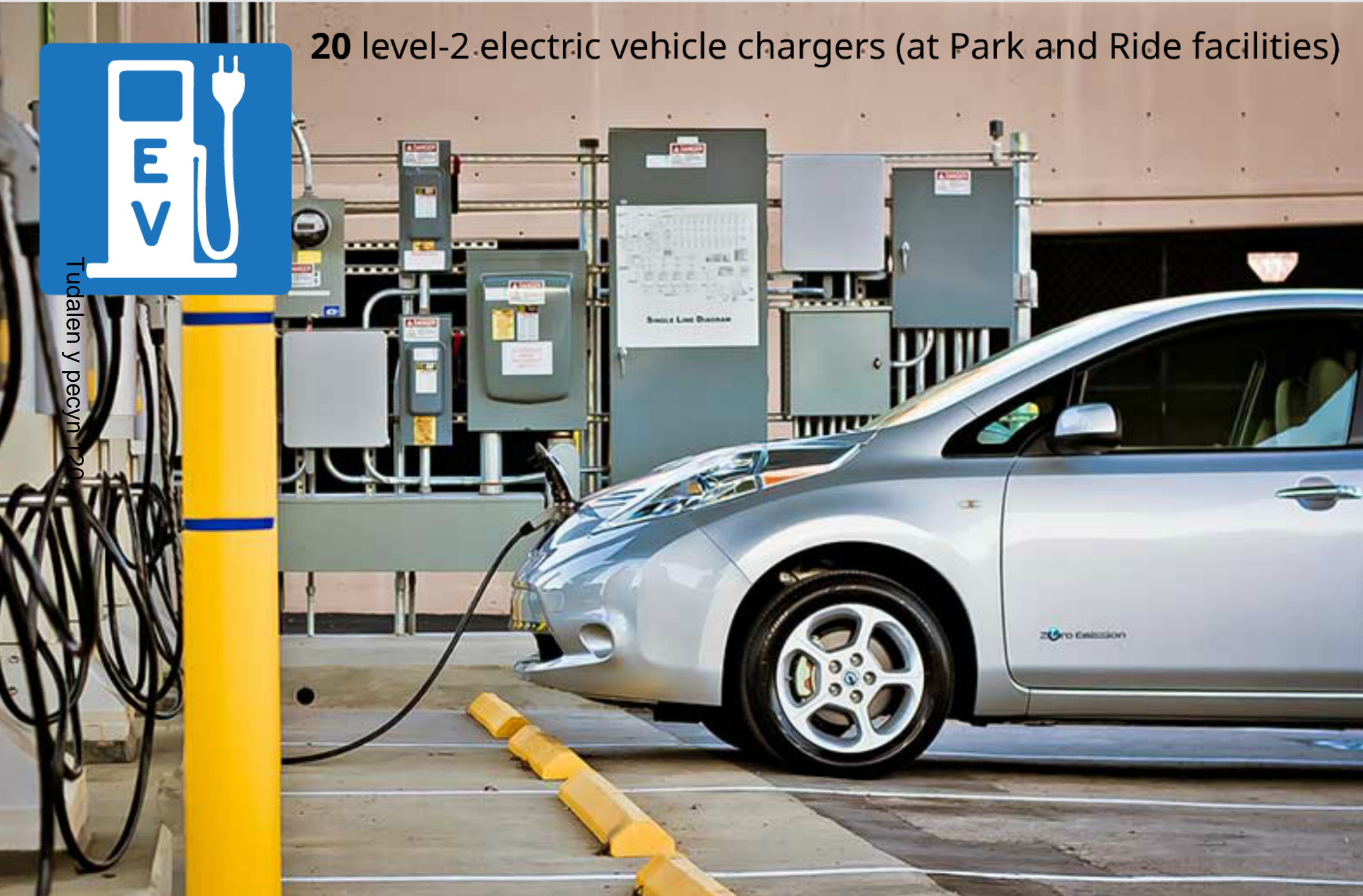
Transit ridership depends on **safe and efficient access** to station areas. The project worked with community members and partners to maximize station access, include **bicycle and pedestrian facility improvements**, and designated space for **electric vehicle chargers, car sharing, and bike sharing programs** along the alignment. These amenities offer transit riders more options to complete the “last mile” (or first mile) of their trip.



20 level-2 electric vehicle chargers (at Park and Ride facilities)



Tudalen y pecyn 120



Context-Sensitive Public Art

Expressing the uniqueness of individual station areas, inspiring civil discourse, and **encouraging connectivity, stewardship and sustainability** are what the public art program is all about.

Tudalen y pecyn 121

Early in construction, the Orange Lining art installation used construction features, such as silt fences and sidewalks, as a canvas for poetic phrases from area writers. The initiative was intended to **stimulate public involvement** in the new rail line, even as it was being constructed.

In response to community concern about losing trees along the Milwaukie alignment, PMLR's art program commissioned six local artists to **use wood from the trees to create art** to be placed along the new extension of the Trolley Trail.



6,576 jobs created...

1,787 direct professional and technical jobs

Tudalen y pecyn 122



4,789 on-site construction jobs

Energy

Green energy initiatives are being used to offset power usage, save electricity and create sustainable design solutions. Planners and contractors reviewed their experience with these technologies and TRM's former key partnerships to leverage these initiatives and include them in future light rail projects.

Active Transportation

The PMLR transit project includes more than \$60 million in active transportation improvements, including 446 new bike parking spaces, approximately 10 miles of new or replaced sidewalks, and 8 miles of new or replaced bicycle facility improvements. The project team consulted extensively with bicycle and pedestrian stakeholders to plan the improvements.

Bike Portland's March 2014 article gives an overview of active transportation improvements by area: <http://bikeportland.org/2014/03/22/the-orange-line-might-secretly-be-portlands-biggest-bike-project-ever-163213>

"It's likely that this is the largest active transportation investment in the U.S. related to a light rail project."

- Dan Blocher, Executive Director of Capitol Projects

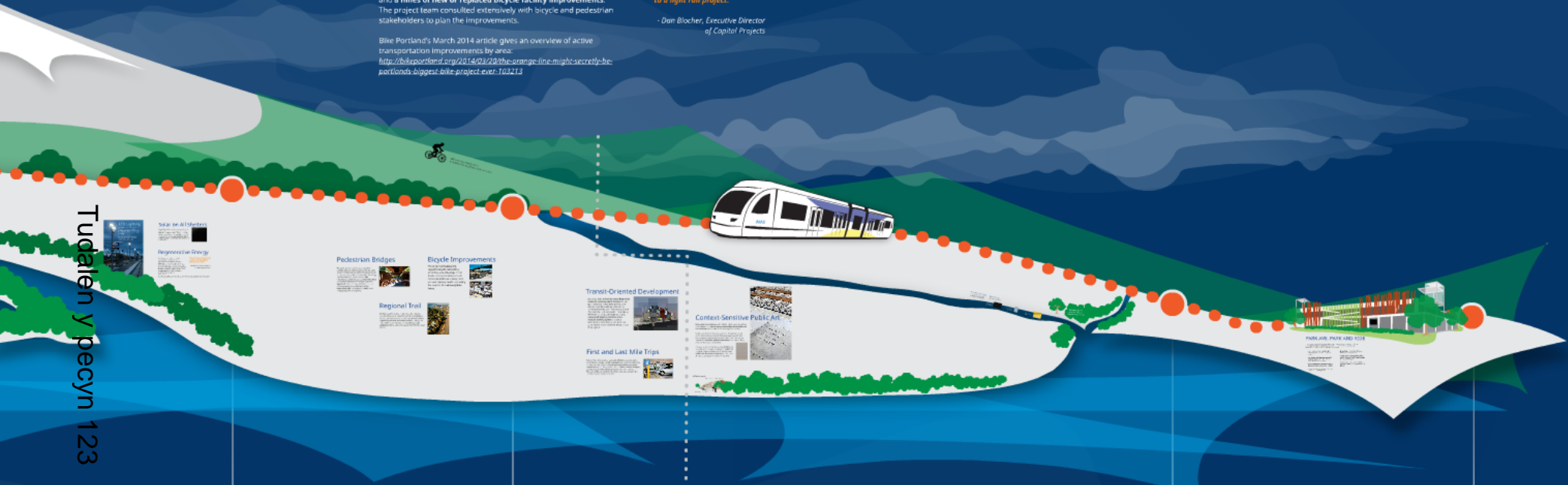
Habitat

Improving the urban natural environment whenever possible is a project priority. The process focused on minimizing impacts to the environment during construction, restoring habitat, and finding ways for infrastructure to interact with natural systems in a positive way.

Livability

At the heart of the project is improving the quality of life for the communities it serves. For the long-term, from being a good neighbor by creating quiet streets to engaging the public to incorporate community values, the project is committed to the wellbeing of individuals and the larger social fabric.

Tudalen y pecyn 123



SE BYBEE BLVD

- SE Bybee Blvd Station
- Regional Trail
- Pedestrian Bridges
- Bicycle Improvements
- Transit-Oriented Development
- Context-Sensitive Public Art
- First and Last Mile Trips

SE TACOMA ST / JOHNSON CREEK

- Regional Trail
- Pedestrian Bridges
- Bicycle Improvements
- Transit-Oriented Development
- Context-Sensitive Public Art
- First and Last Mile Trips

MULTNOMAH COUNTY / CLACKAMAS COUNTY

- Transit-Oriented Development
- Context-Sensitive Public Art
- First and Last Mile Trips

MILWAUKIE / MAIN ST

- Milwaukie Station
- Context-Sensitive Public Art

SE PARK AVE

- Park Avenue Station
- Context-Sensitive Public Art

SE BYBEE BLVD

SE TACOMA ST / JOHNSON CREEK

MULTNOMAH COUNTY / CLACKAMAS COUNTY

MILWAUKIE / MAIN ST

SE PARK AVE

Spotlights

- Park Avenue Park and Ride
- Tilikum Crossing

Closing



TRM's Orange Line moves beyond providing a new public transit option to the Portland metro area. The project piloted new technologies and leveraged infrastructure to incorporate sustainable practices, environmental improvements, and human scale design.

By the time the first train runs in 2015, the Orange Line will already have created a lasting legacy - by setting a benchmark standard for future large infrastructure projects in the Portland region, the Pacific Northwest and beyond.

Spotlights

Tudalen y pecyn 124

- Park Avenue Park and Ride
- Tilikum Crossing



PARK AVE. PARK AND RIDE

The SE Park Ave Park & Ride is a nexus of the Orange Line's sustainability program. The facility goes **beyond providing a platform for commuters** - it is designed to be a **community gateway** and an example of **sustainable practices in action**.

- A public square creates a **community gathering place** and links existing transit services.
- **68% of the site's footprint is set aside for restored habitat**, while still providing sufficient parking for commuters.
- **Invasive plants were removed and native species planted** to restore former habitats.
- A **green roof** provides stormwater treatment and creates a **vertical garden**.
- **Bike parking** and space for a future **car sharing** program is provided.
- **Electric vehicle charging stations** will be used by TriMet and Portland State University to research travel patterns.
- **Solar panels** will offset all of the building's operating functions, including elevators and lighting.

PARK AVE. PARK AND RIDE

The SE Park Ave Park & Ride is a nexus of the Orange Line's sustainability program. The facility goes **beyond providing a platform for commuters** – it is designed to be a **community gateway** and an example of **sustainable practices in action**.

Fudalen y pecyn 126

- A public square creates a **community gathering place** and links existing transit services.
- **68% of the site's footprint is set aside for restored habitat**, while still providing sufficient parking for commuters.
- **Invasive plants were removed** and **native species planted** to restore former habitats.
- A **green roof** provides stormwater treatment and creates a **vertical garden**.
- **Bike parking** and space for a future **car sharing** program is provided.
- **Electric vehicle charging stations** will be used by TriMet and Portland State University to research travel patterns.
- **Solar panels** will offset all of the building's operating functions, including elevators and lighting.

TILIKUM CROSSING: BRIDGE OF THE PEOPLE

The **first new Willamette River crossing** in more than forty years, Tilikum Crossing is exclusively dedicated to **transit, bicycles and pedestrians**.

- Connects existing routes to create a **new, four-mile bike/ped loop** across the river.
- **Bike counters** display cycling patterns and support future infrastructure investment.
- **LED bridge illumination mimics the rhythms of the water below** – changing color based the river’s speed, height and temperature.
- Rainfall on the bridge will be **transferred to stormwater treatment facilities**; runoff from other Portland bridges currently goes directly into sewer overflow.
- Provides a unique site for research on **wind-generated energy in urban environments**.



Twelve proposed wind turbines on the bridge would break ground in urban wind-generated electricity.

Hydalen V pecyn 128



Closing



Tudalen y pecyn 129

TriMet's Orange Line moves beyond providing a new public transit option to the Portland metro area. The project piloted **new technologies** and leveraged infrastructure to **incorporate sustainable practices, environmental improvements, and human-scale design.**

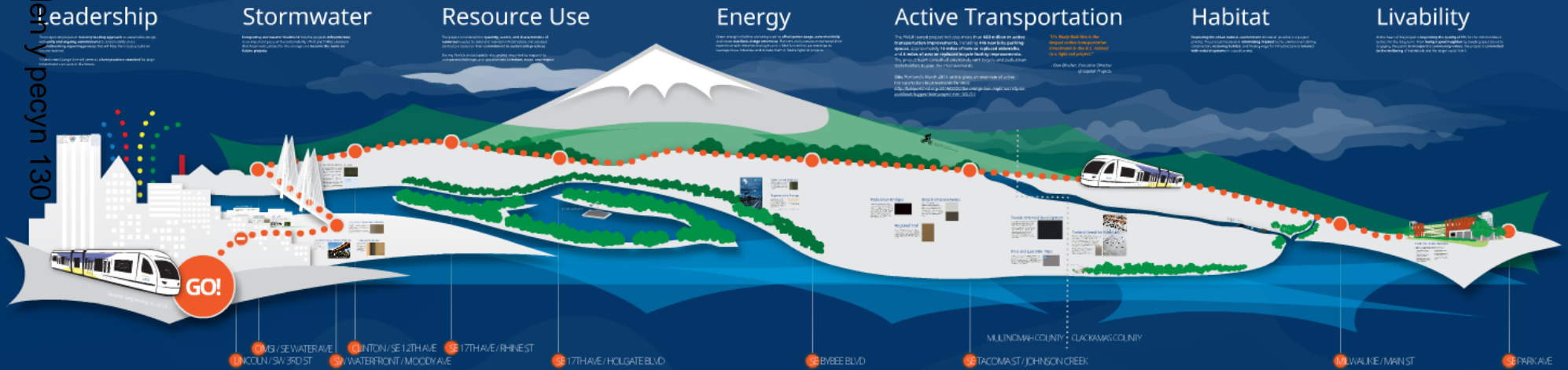
By the time the first train runs in 2015, the Orange Line will already have created a **lasting legacy** – by serving as a **best practices** standard for future large infrastructure projects in the Portland region, the Pacific Northwest and beyond.

PORTLAND-MILWAUKIE LIGHT RAIL TRANSIT PROJECT



Sustainability Overview

Tudalen y pecyn 130



Spotlights

- Park Norman Park and Park
- Transit Crossing

Closing



Light Rail is a game-changer for the region, providing a faster, more reliable mode of public transit. It will help reduce traffic congestion, improve air quality, and create jobs. The project is a testament to the region's commitment to sustainable transportation.

Directorate Team	Contract No.	Title	All Wales	Contract Completed By:	Expiry Date	Option to Extend	OJEU Yes / No	Future Sourcing Strategy
Corporate Services	EQ1063/RJ	Supply, Delivery & Hosting of a Digital Public Communications Platform	CCS	30/05/18	30/06/18	12 months	No	CCS
Corporate Services	PS896/RJ	Supply, Delivery & Hosting of a Common Housing Register & Associated Modules	CCS	30/06/19	31/07/19		Yes	CCS/NPS
Corporate Services	PS871/NA	Estates Professional Services	CCS	21/07/21	21/08/21		Yes	CCS
Corporate Services	RM1076	Corporate Energy Arrangement - Gas	NPS	28/02/19	31/03/19	12 Months	Yes	NPS
Corporate Services	S-CFM-0071	Corporate Energy Arrangement - Electricity	NPS	28/02/19	31/03/19	12 Months	Yes	NPS

Note: Caerphilly CBC sometime use CCS because the NPS has chosen to use them as the nominated framework. The energy contracts are CCS but it was via a NPS deal.

Eitem 4

Yn rhinwedd paragraff(au) vi o Reol Sefydlog 17.42

Mae cyfyngiadau ar y ddogfen hon

Cynulliad Cenedlaethol Cymru
Y Pwyllgor Cyfrifon Cyhoeddus: Caffael Cyhoeddus
Ymateb gan Llywodraeth Cymru

Rôl Arweiniol Llywodraeth Cymru

Mae gan Lywodraeth Cymru rôl bwysig wrth osod y cyfeiriad, wrth ddatblygu polisi mewn meysydd sy'n bwysig i Gymru, ac wrth arwain yn gadarn ac yn glir ym maes caffael cyhoeddus yng Nghymru. Mae wedi gwneud hyn drwy Ddatganiad Polisi Caffael Cymru, sy'n rhestru deg o egwyddorion clir ac yn amlinellu'r hyn sy'n ddisgwyliedig gan gyrff y sector cyhoeddus a Llywodraeth Cymru er mwyn sicrhau gwell canlyniadau drwy gaffael. Mae Llywodraeth Cymru hefyd yn ceisio arwain drwy esiampl lle bynnag y bo hynny'n bosibl, ac mae wedi mabwysiadu nifer o'r polisiau a'r dulliau o gaffael a geir yn y Datganiad fel rhan o'i brosesau caffael ei hun.

Datganiad Polisi Caffael Cymru

Cyhoeddwyd Datganiad Polisi Caffael Cymru am y tro cyntaf yn 2012, a hynny gan y Gweinidog Cyllid ar y pryd. Cyhoeddwyd [y Datganiad ar ei newydd wedd](#) yn 2015, er mwyn i'r egwyddorion ynddo gyd-fynd â'r newidiadau i Reoliadau Contractau Cyhoeddus 2015. Nodwyd mai'r bwriad hefyd oedd i'r Datganiad gyd-fynd â gofynion Deddf Llesiant

Cenedlaethau'r Dyfodol, a oedd newydd gael ei phasio. Ymrwymodd y sector cyhoeddus yng Nghymru i gydymffurfio â Datganiad Polisi Caffael Cymru, gan gydnabod bod hwnnw'n gosod cyfeiriad polisi Llywodraeth Cymru ar gyfer caffael yng Nghymru. Mae'r sector wedi ymrwymo yn y fath fodd drwy greu llythyrau ffurfiol ac/neu drwy gymeradwyo'r Datganiad yn y Bwrdd Caffael.

Ceir isod grynodedb o effaith pob un o egwyddorion Datganiad 2015, ynghyd â'r cynnydd a wnaed gyda'r rheini:

Strategol

Mae'r Datganiad yn nodi y dylai gwaith caffael gael ei gydnabod a'i reoli fel swyddogaeth gorfforaethol strategol sy'n trefnu a deall gwariant; sy'n dylanwadu ar y gwaith cynnar o gynllunio a threfnu gwasanaethau ac sy'n cyfrannu at y broses benderfynu er mwyn cefnogi'r gwaith o gyflawni amcanion cyffredinol.

Er mwyn helpu i gyflawni hyn, rhoddodd Llywodraeth Cymru raglen o Wiriadau Ffitrwydd

Caffael ar waith yn 2014, a'i chyflwyno mewn 31 o sefydliadau. Rhoddodd Llywodraeth Cymru gymorth i alluogi'r sefydliadau i roi sylw i gynlluniau gwella a oedd wedi deillio o'r adolygiadau. Ar ôl ymgysylltu â rhanddeiliaid yn 2015, datblygwyd dull newydd o gynnal adolygiadau, a hwnnw wedi'i seilio ar hunanasesiadau. Treialwyd y dull hwn ymhlith nifer bychan o gyrff cyhoeddus. Ar 21 Medi 2017, cyhoeddodd Ysgrifennydd y Cabinet dros Gyllid bod rhaglen newydd i adolygu gallu bellach yn cael ei datblygu, law yn llaw â'r adolygiad o'r Gwasanaeth Caffael Cenedlaethol a Gwerth Cymru. Mae Adroddiad Swyddfa Archwilio Cymru ar Gaffael Cyhoeddus yn argymhell defnyddio'r Gwiriadau Ffitrwydd mewn ffordd fwy cyson, gyda gwell canllawiau a gwaith dadansoddi gan Lywodraeth Cymru. Drwy gydweithio, y bwriad yw y bydd modd cynnal y gwiriadau hyn mewn ffordd newydd drwy gyflwyno rhaglen newydd ar gyfer caffael.

Adnoddau Proffesiynol

Mae Llywodraeth Cymru wedi hyrwyddo safon fyd-eang y Sefydliad Siartredig Caffael a Chyflenwi fel fframwaith y dylai gyrff y sector cyhoeddus yng Nghymru ei ddefnyddio er mwyn helpu i ddatblygu gallu proffesiynol a rhoi trywydd i unigolion ei ddilyn wrth ddatblygu sgiliau a gwneud cynnydd yn eu gyrfaedd yn y dyfodol. Yn sgil prosiect Defnyddio Doniau Cymru Cronfa Gymdeithasol Ewrop, a ddaeth i ben ym mis Mehefin 2015, cafwyd 38 o hyfforddeion caffael newydd, a fu'n helpu amryw o sefydliadau i arbed dros £7 miliwn.

Effaith Economaidd, Gymdeithasol ac Amgylcheddol

Mae Llywodraeth Cymru wedi rhoi arweiniad a chyfeiriad clir i sicrhau effeithiau ehangach, cadarnhaol yn sgil caffael. Mae gyrff cyhoeddus wedi cael eu hannog i fabwysiadu'r diffiniad ehangach o 'Werth' yn unol â Datganiad Polisi Caffael Cymru, gan osgoi rhoi contractau ar sail y pris yn unig. Mae Gwerth Cymru wedi datblygu cyngor a chanllawiau am bolisi yn y maes hwn i gyd-fynd ag egwyddorion y Datganiad, ac mae'r rhain ar gael yn gyhoeddus yn y Canllaw Cynllunio Caffael - mae canllawiau penodol ar gael yn y meysydd polisi pwysig hyn:

Y Cod Ymarfer

Mae'r Cod Ymarfer ar Gyflogaeth Foesebol mewn Cadwyni Cyflenwi, a gyhoeddwyd ym mis Mawrth 2017, yn sicrhau bod gweithwyr sy'n ymwneud â contractau cyhoeddus yn cael eu trin yn deg ac yn cael telerau teg, ac mae'n rhoi sylw i faterion fel caethwasiaeth fodern, y cyflog byw a hunangyflogaeth ffug. Mae disgwyl i bob sefydliad sy'n cael cyllid cyhoeddus, boed yn uniongyrchol neu drwy grantiau neu gontractau, ymrwymo i'r Cod.

Neilltuo Contractau

Llywodraeth Cymru oedd y weinyddiaeth gyntaf i achub ar y cyfle i neilltuo contractau ar gyfer gweithdai cysgodol. Roedd y nifer a fanteisiodd ar y trefniadau hyn yn siomedig, a'r argraff o hyd yw nad yw trefniadau neilltuo o'r fath yn rhoi cystal gwerth am arian â'r hyn a geir drwy gystadleuaeth ar y farchnad agored. Er mwyn annog mwy i neilltuo contractau, mae Llywodraeth Cymru'n arwain gwaith i greu eglurder ynghylch pwy sy'n gymwys, ac mae'n gweithio gyda Busnes Cymdeithasol Cymru i wella'r wybodaeth am y farchnad ar gyfer y sector cyhoeddus a'r ochr gyflenwi.

Swyddi Gwell yn Nes Adref

Mae gwaith hefyd yn mynd rhagddo ar ein rhaglen Swyddi Gwell yn Nes Adref – rhaglen sy'n canolbwyntio ar gydlynu ystod o ymyriadau polisi, ym mhob rhan o Lywodraeth Cymru, er mwyn defnyddio caffael cyhoeddus i greu swyddi a chynnig hyfforddiant yn ein cymunedau tlotaf. Mae'r rhaglen yn rhan o'n cynllun gweithredu 'Ein Cymoedd Ein Dyfodol' ac mae pedair rhaglen beilot ar waith, sef modelau o ymyriadau masnachol y gellid, os byddant yn llwyddiannus, eu cyflwyno mewn mannau eraill.

Adnodd Dadansoddi Gwariant Atamis

Er mwyn deall yn well sut y gellir gwireddu potensial caffael cyhoeddus, mae Llywodraeth Cymru wedi rhoi gwasanaeth dadansoddi gwariant i'r sector cyhoeddus, a hwnnw'n cael ei gyllido'n ganolog. Credwyd ei bod yn bwysig i sefydliadau allu cael y wybodaeth ddiweddaraf, a hynny'n rheolaidd, am wariant rhanddeiliaid. Yn eu plith y mae sefydliadau unigol yn y sector cyhoeddus a'r rhai sy'n rhan o Lywodraeth Cymru, gan gynnwys y Gwasanaeth Caffael Cenedlaethol, Gwerth Cymru, a'r Grŵp Digidol a Data. Ers mis Awst

2015, drwy'r darparwr gwasanaeth presennol, mae gwaith wedi mynd rhagddo gyda'r Gwasanaeth Caffael Cenedlaethol a sefydliadau ledled Cymru er mwyn casglu gwybodaeth a sicrhau bod pobl yn gallu gweld y wybodaeth honno.

Mae'r gwasanaeth wedi golygu bod modd gweld a dadansoddi data am wariant caffael mewn ffordd ddiogel, a hynny'n rhoi mwy o wybodaeth am nifer o ddangosyddion gwariant pwysig. Mae'r data hwn am wariant wedi helpu i greu cyfleoedd i gaffael ar y cyd mewn categorïau o bwys. Mae hefyd wedi helpu i ddatblygu a chynllunio strategaethau caffael ac ateb gofynion sy'n deillio o bolisïau a rhaglenni ehangach fel Swyddi Gwell yn Nes Adref a'r agenda datgarboneiddio.

Mae'r gwaith wedi mynd rhagddo'n gadarnhaol ac wedi bod yn llwyddiannus wrth

gyflawni ei amcanion, yn bennaf yn sgil maint y data am wariant sy'n cael ei gasglu gan sefydliadau.

Wrth ymateb i adroddiad diweddar Swyddfa Archwilio Cymru ar Gaffael Cyhoeddus yng Nghymru, mae Llywodraeth Cymru yn adolygu ei ganllawiau ar gyfer sut i ymwneud â'r prosiect dadansoddi gwariant. Mae gwahoddiad wedi'i roi i'r sector addysg bellach i ymwneud â'r gwaith hwn, ac rydym yn edrych ar gyfleoedd i gynnwys cyrff a noddir. Y bwriad yw y bydd crynodeb o'r gwir wariant drwy ei Fframweithiau yn cael ei gynnwys yn Adroddiadau Blynyddol y Gwasanaeth Caffael Cenedlaethol.

Cyflwyno Cynnig ar y Cyd

Mae dulliau arloesol fel ein canllawiau i gyflwyno cynnig ar y cyd yn helpu i sicrhau bod contractau cyhoeddus yn cael eu creu mewn ffyrdd sy'n ei gwneud yn rhwydd i gonsortia gynnig amdanynt, ac mae hefyd yn helpu busnesau bach a chanolig eu maint i oresgyn yr heriau sy'n eu hwynebu wrth geisio ennill contractau cydweithredol gwerth uchel gan y sector cyhoeddus. Contractau yw'r rhain na fyddent yn gallu cystadlu amdanynt ar eu pennau'u hunain. Yn ystod 2017, mae data GwerthwchiGymru yn dangos bod gan 25% o'r holl hysbysiadau contractau a hysbysebwyd ar GwerthwchiGymru dic yn y blwch sy'n dangos bod y tendrau yn addas ar gyfer cynigion gan gonsortia (928 o'r 3599 o hysbysiadau).

Cosbrestru

Llywodraeth Cymru oedd y weinyddiaeth gyntaf i fod yn gadarn ynghylch cosbrestru, ac roedd y Nodyn Cyngor Caffael a ddatblygwyd yn rhoi eglurder yr oedd ei wir angen ar brynwyr ynghylch pryd y gellid gwahardd cyflenwyr a oedd yn ymwneud â chosbrestru. Mae defnyddio'r Nodyn hwn drwy Gymru wedi cael effaith gadarnhaol ar y diwydiant.

Manteision Cymunedol

Mae Llywodraeth Cymru wedi rhoi cymorth ac arweiniad er mwyn galluogi sector cyhoeddus Cymru i sicrhau'r gwerth mwyaf o gaffael drwy sicrhau manteision cymunedol. Mae Llywodraeth Cymru wrthi'n hwyluso cyfres o gynlluniau peilot sy'n ceisio sicrhau manteision cymunedol, gan alluogi cyrff cyhoeddus i wreiddio egwyddorion Deddf Llesiant Cenedlaethau'r Dyfodol yn eu prosesau caffael. Mae Cymuned Ymarfer yn cyfarfod ddwywaith y flwyddyn ar gyfer swyddogion yn y sector cyhoeddus sydd â diddordeb mewn sicrhau manteision cymunedol neu sy'n cyfrannu at y gwaith hwnnw. Rydym wedi datblygu adnoddau i hyrwyddo'r modd y

sicrheir Manteision Cymunedol, ac er mwyn cymell hynny. Bydd modiwl e-ddysgu newydd ar Fanteision Cymunedol yn cael ei lansio yn gynnar yn 2018, a bydd hwn yn helpu i ddatblygu gallu ac yn hyrwyddo'r maes ymhellach.

Cystadleuaeth Agored, Hygyrch

Mae'n hanfodol i gyflenwyr bychain a chwmnïau'r trydydd sector bod y cyfleoedd i gael contractau cyhoeddus yn agored ac yn hygyrch, ac mae Datganiad Polisi Caffael Cymru yn ei gwneud yn ofynnol hysbysebu pob contract sy'n werth dros £25k ar GwerthwchiGymru.

Hysbysiadau Gwerth Isel

Mae nifer yr hysbysiadau am contractau gwerth isel a hysbysebiri ar GwerthwchiGymru (h.y. y rhai sydd o dan drothwy'r OJEU – Cyfnodolyn Swyddogol yr Undeb Ewropeaidd – ac yn fwy tebygol o gael eu hennill gan gwmnïau'r trydydd sector a chyflenwyr llai o Gymru) wedi cynyddu o 80% o'r holl hysbysebion a gyhoeddwyd yn 2015–16 i 84% yn 2016–17. Mae hyn wedi golygu bod nifer y contractau gwerth isel sydd wedi'u hennill gan fusnesau o Gymru wedi cynyddu o 50% yn 2015–16 i 55% yn 2016–17.

Mae Llywodraeth Cymru wedi nodi argymhelliad Swyddfa Archwilio Cymru y dylai hyrwyddo gwell defnydd o'r SQuID (Cronfa Ddata Gwybodaeth am Gymwysterau Cyflenwyr) a bydd yn creu arolwg i ganfod y defnydd a wneir o'r gronfa a pha gymorth pellach y mae ei angen er mwyn iddi ennill ei phlwyf.

Prosesau Safonol Syml

Mae nifer o gamau wedi'u cymryd er mwyn helpu i sicrhau bod prosesau caffael yn agored ac yn hygyrch, a hynny ar sail dulliau safonol a'r defnydd o systemau cyffredin sy'n lleihau cymaint ag y bo modd ar gymhlethdod, costau, amser a'r gofynion i gyflenwyr.

Y Gwasanaeth eGaffael (ePS)

Daeth rhaglen y Gwasanaeth eGaffael, a oedd yn cael ei chyllido'n ganolog, i ben ar 31 Mawrth 2017. Roedd y rhaglen hon yn cynnwys ystod o wasanaethau eGaffael (tendro, masnachu a thaliadau electronig), a chymorth i helpu gyda'r newid hwn ac i alluogi pobl i ddefnyddio'r dechnoleg. Roedd modd i gyrff y sector cyhoeddus yng Nghymru ddefnyddio'r gwasanaethau a'r cymorth a oedd ar gael i helpu gyda'r newid yn rhad ac am ddim. Er i'r rhaglen ddod i ben yn ffurfiol ar 31 Mawrth 2017, mae contractau'n dal i fodoli tan fis Ionawr 2019 a gall gyrff y sector cyhoeddus yng Nghymru barhau i ddefnyddio'r dechnoleg yn rhad ac am ddim tan hynny. Mae

cyngor wrthi'n cael ei baratoi er mwyn argymhell sut y dylid bwrw ymlaen ar ôl i'r contractau ddod i ben.

Cyfrifon Banc Prosiectau

Er mwyn rhoi sylw i'r problemau y mae cwmnïau bach yn aml yn eu hwynebu yn sgil taliadau hwyr, arweiniodd Llywodraeth Cymru y gwaith o gyflwyno Cyfrifon Banc Prosiectau. Mae hyn yn sicrhau bod isgcontractwyr yn cael eu talu'n brydlon ac mewn ffordd deg, ac mae'n gwella'r berthynas rhwng gwahanol bartïon yn y gadwyn gyflenwi.

Cydweithio

Roedd Datganiad Polisi Caffael Cymru yn ei gwneud yn ofynnol rhoi sylw ar y cyd i feysydd gwariant cyffredin, a hynny gan ddefnyddio dulliau a manylebau wedi'u safoni, a'r rheini o dan reolaeth y Gwasanaeth Caffael Cenedlaethol. Y nod oedd lleihau dyblygu, denu'r ymateb gorau gan y farchnad, gwreiddio egwyddorion y Datganiad Polisi hwn er budd

Cymru, a rhannu adnoddau ac arbenigedd. Ers ei greu, mae'r Gwasanaeth Caffael Cenedlaethol, law yn llaw â Gwerth Cymru, wedi gallu sicrhau cynnydd wrth ymelwa cymaint ag y bo modd ar werth caffael yn yr ystyr ehangaf. Gwnaed hyn drwy gynyddu nifer y cyflenwyr o Gymru, a chwmnïau bach a chanolig eu maint yn enwedig, sy'n ennill contractau cyhoeddus, a thrwy wreiddio Datganiad Polisi Caffael Cymru ym mhrosesau caffael y sector cyhoeddus yng Nghymru. Drwy'r Gwasanaeth Caffael Cenedlaethol, mae'r sector cyhoeddus yng Nghymru yn gallu manteisio ar gydweithio wrth gaffael, ac mae'r prosesau hynny wedi'u datblygu a'u cyflwyno yng Nghymru er budd Cymru.

Mae adroddiad Swyddfa Archwilio Cymru ar y Gwasanaeth Caffael Cenedlaethol yn cydnabod yr heriau sy'n bodoli wrth gydweithio ar gaffael, ac mae'n cydnabod pa mor anodd yw ateb anghenion pob sefydliad. Mae'n werth cofio bod y cydweithio gorau drwy'r Gwasanaeth Caffael Cenedlaethol yn digwydd yn y meysydd hynny lle mae gan sefydliadau staff penodol sy'n gyfrifol am y meysydd dan sylw. Ar y cyfan felly, mae modelau cydweithio ym meysydd ynni, fflyd, staff asiantaeth a TGCh wedi arwain at atebion llwyddiannus ac wedi golygu bod modd rhoi adborth a gwella'n rheolaidd.

Ymgysylltu â Chyflenwyr ac Arloesi

Mae Datganiad Polisi Caffael Cymru yn annog deialog â chyflenwyr i helpu i gael y gorau o'r farchnad, i hysbysu ac addysgu cyflenwyr, ac i sicrhau'r gwerth gorau am

arian. Er mwyn rhoi hwb i hyn, cyflwynodd Llywodraeth Cymru y Gwasanaeth Gwrando ar Gyflenwyr er mwyn galluogi cyflenwyr i fynegi pryderon a rhoi adborth am gaffael cyhoeddus yng Nghymru. Drwy roi un pwynt cyswllt i gyflenwyr, gall tîm annibynnol a diduedd fynd i'r afael yn effeithiol â phroblemau gyda chaffael cyhoeddus (tîm datblygu polisi a gallu Gwerth Cymru sy'n rheoli'r Gwasanaeth Gwrando ar Gyflenwyr, ac mae'n annibynnol ar yr awdurdodau contractio).

Mae'r Gwasanaeth Gwrando wedi cael ei hyrwyddo ymhlith busnesau ac awdurdodau contractio. Rydym yn cymryd camau i hysbysebu'r gwasanaeth yn ehangach ymhlith cyflenwyr, er enghraifft drwy ofyn i awdurdodau ei hysbysebu a rhoi dolen ar eu gwefannau.

Datblygu a Gweithredu Polisi

Ers lansio fersiwn 2015 o Ddatganiad Polisi Caffael Cymru, mae Llywodraeth Cymru wedi helpu'r sector cyhoeddus yng Nghymru gyda'u prosesau caffael cyhoeddus drwy ddatblygu ystod o gynlluniau polisi sydd wedi canolbwyntio ar faterion sy'n bwysig i Gymru. Mae canllawiau a chyngor am bolisi wedi'u datblygu a'u cyhoeddi ar ffurf Nodiadau Cyngor Caffael, a hynny ym meysydd Manteision Cymunedol, Cyfrifon Banc Prosiectau, Cosbrestru, y Cod Ymarfer ar Gyflogaeth Foesegol mewn Cadwyni Cyflenwi, Ymgeisio ar y Cyd, Cefnogi Cyrchu Dur mewn Prosiectau Adeiladu a Seilwaith Mawr, Taliadau Ambarél, Cytundebau

Fframwaith, Cytundebau Fframwaith Tybiannol, Neilltuo Contractau, diweddariad SQuID (Cronfa Ddata Gwybodaeth am Gymwysterau Cyflenwyr), y Cod Ymarfer Diwygiedig ar Faterion y Gweithlu, ac Adnoddau eGaffael.

Mesur ac Effaith

Fel atodiad i Ddatganiad Polisi Caffael Cymru, ceir ystod o ddangosyddion sy'n ceisio mesur effaith y Datganiad a helpu i ddatblygu aeddfedrwydd wrth gaffael ledled Cymru. Datblygwyd y rhain drwy gynnal trafodaeth â rhanddeiliaid yn y sector cyhoeddus, ond am sawl rheswm, nid yw pawb wedi'u mabwysiadu.

Datganiad Polisi Caffael Cymru – y casgliadau

Fel y nodwyd yn y ddogfen hon, mae'r broses o fabwysiadu egwyddorion Datganiad Polisi Caffael Cymru, a hynny'n eang, wedi cael effaith gadarnhaol mewn nifer o feysydd pwysig, ac mae hyn wedi arwain at fudd uniongyrchol i Gymru. I grynhoi:-

Mae cyflenwyr wedi cael budd: Mae symleiddio'r broses gaffael a sicrhau bod contractau'n agored ac yn hygyrch wedi golygu bod y gwariant sy'n mynd i

gyflenwyr o Gymru wedi parhau ar lefel o tua 50% mewn sectorau allweddol fel adeiladu, ac mae mabwysiadu egwyddorion y Datganiad Polisi yn golygu bod dros 70% o'r contractau mawr a roddir drwy Gwerthwchi Gymru bellach yn mynd i gontractwyr o Gymru.

Mae economi a dinasyddion Cymru wedi cael budd: Mae'r polisi Manteision Cymunedol yn helpu i drechu tloti yn ardaloedd tlotaf Cymru, gan sicrhau bod arian a gaiff ei wario yng Nghymru yn aros yng Nghymru, a rhoi cyfleoedd gwaith a hyfforddiant i bobl ddifreintiedig.

Mae rhanddeiliaid yn y sector cyhoeddus wedi cael budd: Mae Gwerth Cymru wedi rhoi cyfarwyddyd ac arweiniad clir i gyrff y sector cyhoeddus i'w galluogi i sicrhau'r canlyniadau cadarnhaol mwyaf posibl o'r prosesau caffael. Drwy'r Gwiriadau Ffitrwydd Caffael, ynghyd â chymorth ariannol, roedd modd i gyrff y sector cyhoeddus wella eu gallu a meincnodi eu hunain ochr yn ochr â sefydliadau eraill.

Mae gweithwyr sy'n gweithio ar gontractau cyhoeddus wedi cael budd: Mae polisiâu fel y Cod ar Gyflogaeth Foesebol, Cosbrestru a Thaliadau Ambarél wedi helpu i sicrhau bod pobl yn cael eu cyflogi mewn ffordd deg a moesegol yn is i lawr cadwyni cyflenwi'r sector cyhoeddus.

Mae'r Gwasanaeth Caffael Cenedlaethol wedi dechrau creu cyfres o adroddiadau sy'n edrych ar astudiaethau achos er mwyn helpu i gynyddu ymwybyddiaeth am yr hyn y mae'n ei wneud i greu cyfleoedd i fusnesau bach a chanolig eu maint.

[Y 'Rhaglen ar gyfer Caffael' a'r camau y mae Llywodraeth Cymru yn eu cymryd i adolygu ffitrwydd trefniadau caffael cyrff cyhoeddus unigol ac i hyrwyddo e-gaffael](#)

Bydd y Rhaglen ar gyfer Caffael yn cael ei chwblhau'n llawn drwy'r broses adolygu a gyhoeddwyd gan Ysgrifennydd y Cabinet dros Gyllid ym mis Medi 2017. Yn y cyfamser, bydd Llywodraeth Cymru'n parhau i roi arweiniad a chymorth i alluogi'r sector cyhoeddus yng Nghymru i sicrhau'r gwerth gorau o gaffael.

Bydd Gwerth Cymru yn parhau i reoli'r gwaith o greu polisi, monitro arferion, cefnogi a chynghori gweithwyr proffesiynol, datblygu'r proffesiwn caffael, a galluogi sefydliadau i gydymffurfio â rheoliadau'r Undeb Ewropeaidd. Bydd yn cyflawni'r gwaith hwn gydag ac ar ran pawb sy'n gwario arian ar nwyddau a gwasanaethau yn sector cyhoeddus Cymru (gan gynnwys Llywodraeth Cymru a'r Gwasanaeth Caffael Cenedlaethol).

Mae Gwerth Cymru wedi cytuno gyda chwsmeriaid ar raglen interim o brosiectau polisi a gallu yn hyn o beth. Bydd yn bwrw ymlaen â'r rhaglen waith hon wrth i'r adolygiad fynd rhagddo, a chyn cyflwyno'r Rhaglen ar gyfer Caffael yn llawn. Mae'r prosiectau sydd ar y gweill yn cynnwys:

- Rhaglenni peilot sy'n ymwneud â Llesiant Cenedlaethau'r Dyfodol (gan roi sylw i adnoddau cymorth safonol; caffael bwyd; plastig a pheccynnu; a hyfforddiant);
- Polisi a chymorth ar gyfer datgarboneiddio;
- Rhaglenni peilot Swyddi Gwell;
- Rhaglen beilot ar yr Economi Gylchol;
- Datblygu rhaglen newydd ym maes gallu, gan gynnwys dull newydd o gynnal gwiriadau ffitrwydd caffael; a
- Datblygu diffiniad newydd o werth caffael sy'n cyd-fynd â Ffyniant i Bawb a'r Cynllun Gweithredu Economaidd.

Bydd y Gwasanaeth Caffael Cenedlaethol yn parhau i greu a rheoli contractau a fframweithiau ar gyfer y pethau cyffredin y mae'r rhan fwyaf o sefydliadau yn eu prynu. Mae gan y Gwasanaeth Caffael Cenedlaethol gynlluniau ar gyfer gwaith yn y dyfodol ac mae'n bwriadu cyflwyno'r contractau a'r fframweithiau hyn a fydd yn cael eu rhoi ar waith ar y cyd â'r 73 o sefydliadau sy'n gwsmeriaid iddo yng Nghymru.

Bydd Gwerth Cymru hefyd yn cynnal y berthynas sydd ganddo i drafod materion polisi caffael gyda Llywodraeth y DU; yn cyfrannu o safbwynt polisi at broses Brexit yng nghyd-destun caffael; yn cynghori Gweinidogion Cymru ynghylch effaith polisi caffael a pholisi masnachol; ac yn rheoli comisiynau corfforaethol Llywodraeth Cymru.

Materion sy'n ymwneud â recriwtio a chadw gallu caffael allweddol

Mae cryn ymwybyddiaeth o'r gwerth y gall gallu caffael a gallu masnachol cryf ei roi i sefydliadau, yn rhai cyhoeddus a phreifat ill dau. Mae hyn wedi arwain at alw mawr am adnoddau a all fod yn brin mewn rhannau o Gymru neu mewn sectorau penodol. Mae adroddiad Swyddfa Archwilio Cymru ar gaffael cyhoeddus yn cydnabod bod angen edrych ar effaith cyflogau gwahanol i staff mewn gwahanol sectorau. Mae presenoldeb asiantaethau mawr Llywodraeth y Deyrnas Unedig, sydd ag adrannau masnachol a chaffael cryf, wedi cynyddu'r pwysau ar sector

cyhoeddus Cymru, yn sgil y telerau cyflogaeth gwell sy'n cael eu cynnig gan Lywodraeth y Deyrnas Unedig.

Mae GIG Cymru wedi dweud wrth y Bwrdd Caffael yn y gorffennol bod y materion hyn yn achosi pryder. Mae cwsmeriaid wedi dweud eu bod yn dymuno gweithio gyda Llywodraeth Cymru i ddatblygu rhaglen ar gyfer gallu caffael yn y dyfodol, ac efallai y gellid dod o hyd i ffordd o ystyried a datblygu atebion ar y cyd i'r argymhelliad hwn.

Mae'r Rhaglen ar gyfer Caffael yn cynnwys elfen newydd sy'n ymwneud â Gallu ac Arweiniad, a honno'n benodol yn ceisio gwella gallu caffael a phroffesiynoldeb drwy holl sector cyhoeddus Cymru.

Pa mor effeithiol yw trefniadau llywodraethu cenedlaethol, hefyd yng nghydestun datganiad diweddar Ysgrifennydd y Cabinet dros Gyllid a Llywodraeth Leol (21 Medi 2017) a chynlluniau Llywodraeth Cymru i uno Bwrdd y Gwasanaeth Caffael Cenedlaethol a'r Bwrdd Caffael Cenedlaethol.

Bu gan Gwerth Cymru a'r Gwasanaeth Caffael Cenedlaethol lefelau amrywiol o lywodraethu dros y blynyddoedd diwethaf. Mae'r Bwrdd Caffael wedi rhoi'r lefel uchaf o lywodraethu ar gyfer gweithredu a darparu polisi caffael cyhoeddus drwy Gymru, gan adrodd yn uniongyrchol i Ysgrifennydd y Cabinet sy'n gyfrifol am Gaffael. Mae'r Gwasanaeth Caffael Cenedlaethol yn atebol i'r rhanddeiliaid sy'n aelodau ohono am ei berfformiad, a hynny drwy Fwrdd y Gwasanaeth Caffael Cenedlaethol sy'n rhoi cyfeiriad strategol a Grŵp Cyflenwi'r Gwasanaeth Caffael Cenedlaethol sy'n rhoi cyfeiriad gweithredol.

Bydd y modd y caiff caffael ei lywodraethu yn cael ei adolygu fel rhan o'r broses o addasu rôl y Gwasanaeth Caffael Cenedlaethol a Gwerth Cymru, fel y cyhoeddwyd yn y Datganiad Ysgrifenedig a wnaed gan Ysgrifennydd y Cabinet dros Gyllid a Llywodraeth Leol ar 21 Medi 2017.

Effaith a pha mor effeithiol yw'r trefniadau i gydweithio ar gaffael drwy'r prif gonsortia caffael yng Nghymru a'r sefydliadau prynu cyhoeddus, gyda ffocws penodol ar rôl a datblygiad y Gwasanaeth Caffael Cenedlaethol.

Rhodddwyd sylw i hyn o dan yr adran am 'Gydweithio' ar dudalen 5. Mae'r Gwasanaeth Caffael Cenedlaethol, a sefydlwyd ym mis Tachwedd 2013, yn rhoi ffocws i gydweithio ar gaffael drwy holl sector cyhoeddus Cymru, gan sicrhau arbedion a gwreiddio polisi Gwerth Cymru yn ei waith. Yr egwyddor yw prynu unwaith yn unig i Gymru. Er mwyn i hynny gael effaith a llwyddo, rhaid i bob sefydliad ddefnyddio'r Gwasanaeth ar gyfer y categorïau lle ceir gwariant ar yr un pethau dro ar ôl tro.

Mae adroddiad Swyddfa Archwilio Cymru ar y Gwasanaeth Caffael Cenedlaethol yn cydnabod yr heriau sy'n bodoli wrth gydweithio ar gaffael, ac mae'n cydnabod pa mor anodd yw ateb anghenion pob sefydliad. Mae hefyd yn argymhell y dylid gwneud rhagor o waith i hyrwyddo'r defnydd o Fframweithiau'r Gwasanaeth Caffael Cenedlaethol ac i ddangos manteision y rhain, ac mae'r gwaith hwn yn mynd rhagddo. Bydd hyn hefyd yn cynnwys cyflwyno proses newydd i sicrhau eglurder ynghylch y broses pan fydd sefydliadau am gael eu heithrio o'r trefniadau hyn.

Barn am adroddiadau Archwilydd Cyffredinol Cymru ar Gaffael Cyhoeddus yng Nghymru ym mis Hydref 2017 ac ar y Gwasanaeth Caffael Cenedlaethol ym mis Tachwedd 2017.

Rydym yn falch bod Swyddfa Archwilio Cymru yn cydnabod pwysigrwydd cyfraniad caffael tuag at ddarparu gwasanaethau cyhoeddus i Gymru. Rydym yn croesawu casgliadau'r adroddiadau ar Gaffael Cyhoeddus yng Nghymru a'r Gwasanaeth Caffael Cenedlaethol ill dau. Mae'r argymhellion yn y naill adroddiad ar llall wedi cael eu derbyn; byddant o gymorth mawr wrth ddatblygu ar y cynnydd a wnaed hyd yma, ac maent yn amserol iawn wrth addasu rôl Gwerth Cymru a'r Gwasanaeth Caffael Cenedlaethol, fel y cyhoeddodd Ysgrifennydd y Cabinet dros Gyllid ar 21 Medi 2017. Mae gwaith yn mynd rhagddo i roi sylw i'r argymhellion yn y ddau adroddiad, mewn ymgynghoriad â rhanddeiliaid yn y sector cyhoeddus, busnesau a phartneriaid cymdeithasol. Er hwylustod, mae copïau o ymatebion Llywodraeth Cymru a gyhoeddwyd ar 6 Tachwedd 2017 ac 14 Rhagfyr wedi'u hatodi isod:-



2017-11-06 Letter to WAO - Re...



2017-12-14 Ltr to AGW re NPS s...